

CITY OF BINGHAMTON

Parlor City Commons Conceptual Renovation Plan

Parcel ID#160.49-1-1.111

Posted for public feedback



LaBella

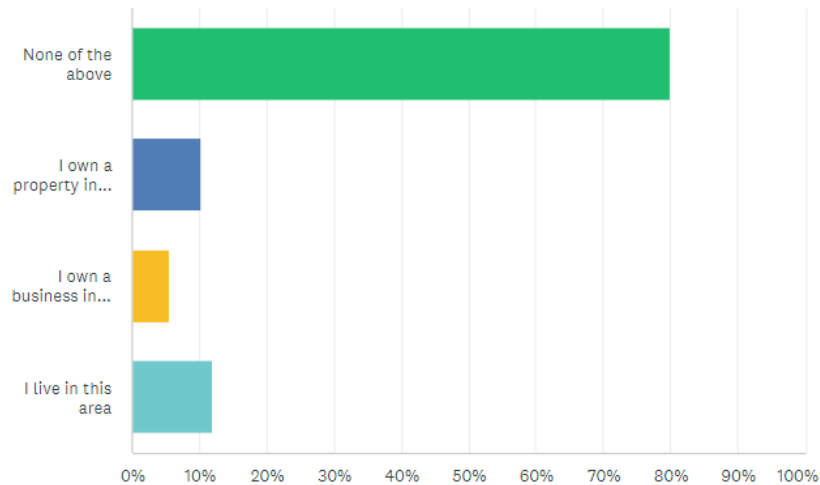
Powered by partnership.

Selected Survey Results

Q4

Do you own property, a business, or live in the area directly adjacent to Parlor City Commons (Washington Street, State Street, Court Street, and Hawley Street)? (Select all that apply)

Answered: 325 Skipped: 0

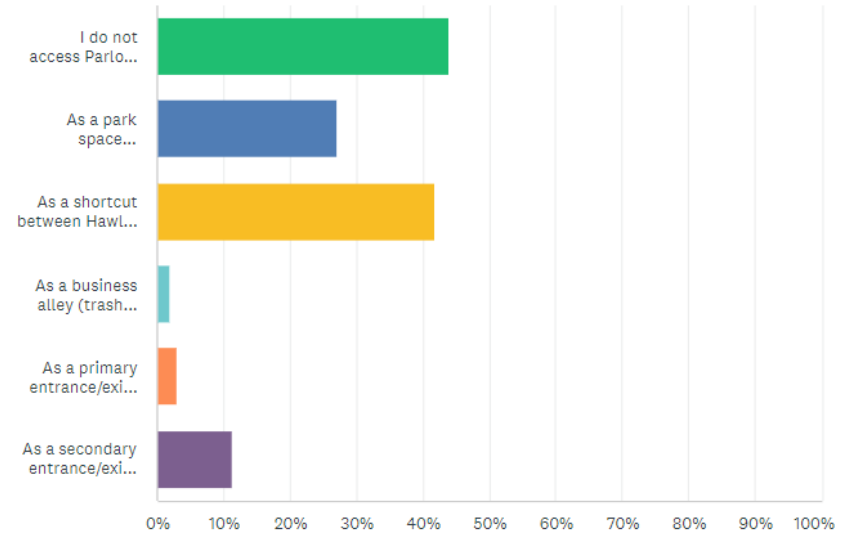


ANSWER CHOICES	RESPONSES
None of the above	80.00% 260
I own a property in this area	10.15% 33
I own a business in this area	5.54% 18
I live in this area	12.00% 39
Total Respondents: 325	

Q5

What do you use Parlor City Commons for? (Please choose up to three of your top uses)

Answered: 325 Skipped: 0



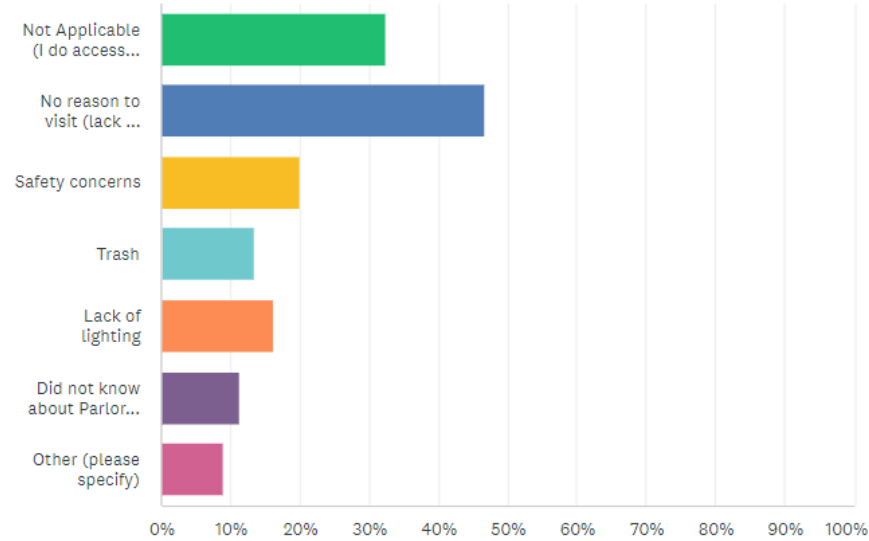
ANSWER CHOICES	RESPONSES
I do not access Parlor City Commons	44.00% 143
As a park space (recreation, outdoor activity, outdoor dining, etc.)	27.08% 88
As a shortcut between Hawley and Washington Streets	41.85% 136
As a business alley (trash, maintenance, etc.)	1.85% 6
As a primary entrance/exit into a building	3.08% 10
As a secondary entrance/exit into a building	11.38% 37
Total Respondents: 325	

Selected Survey Results

Q6

If you do not visit Parlor City Commons, why not?
(Select all that apply)

Answered: 325 Skipped: 0

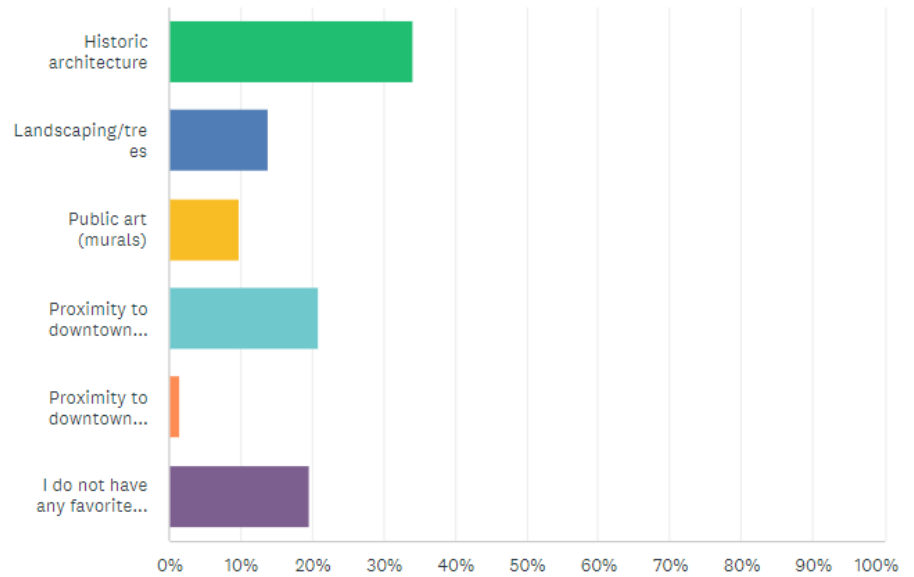


ANSWER CHOICES	RESPONSES
Not Applicable (I do access Parlor City Commons)	32.31% 105
No reason to visit (lack of events, etc.)	46.77% 152
Safety concerns	20.00% 65
Trash	13.54% 44
Lack of lighting	16.31% 53
Did not know about Parlor City Commons	11.38% 37
Other (please specify)	Responses 8.92% 29
Total Respondents: 325	

Q7

What do you like most about the current state of Parlor City Commons?

Answered: 325 Skipped: 0



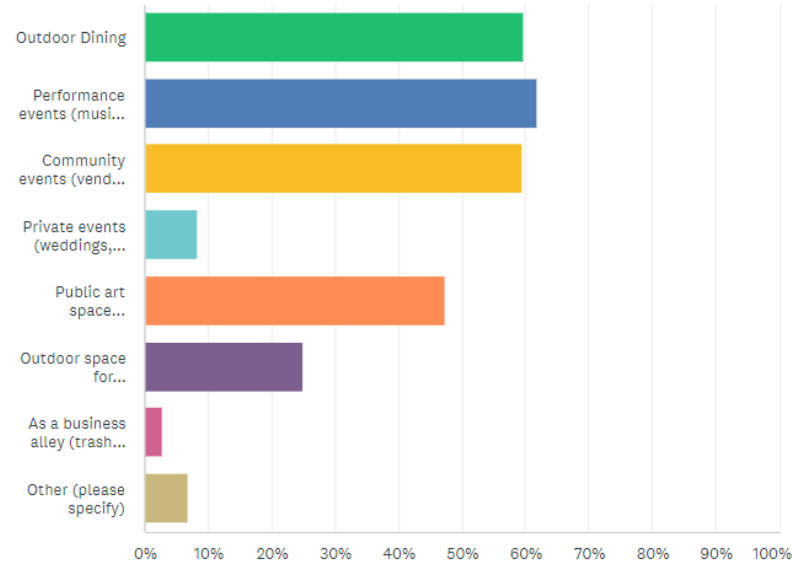
ANSWER CHOICES	RESPONSES
Historic architecture	34.15% 111
Landscaping/trees	13.85% 45
Public art (murals)	9.85% 32
Proximity to downtown businesses	20.92% 68
Proximity to downtown employers	1.54% 5
I do not have any favorite aspect of Parlor City Commons	19.69% 64
TOTAL	325

Selected Survey Results

Q8

In the future, what do you see as the best uses of Parlor City Commons? (Select your top three uses)

Answered: 325 Skipped: 0

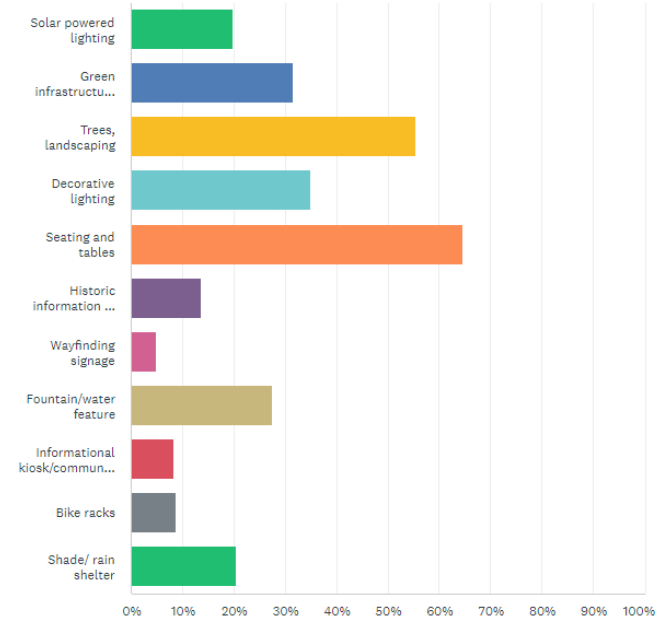


ANSWER CHOICES	RESPONSES
Outdoor Dining	59.69% 194
Performance events (music, theater, etc.)	61.85% 201
Community events (vendor events, community meals, educational programming, etc.)	59.38% 193
Private events (weddings, graduation parties, etc.)	8.31% 27
Public art space (temporary and permanent installations, interactive art, etc.)	47.38% 154
Outdoor space for working/studying	24.92% 81
As a business alley (trash, maintenance)	2.77% 9

Q9

Which amenities/ features would you like to see in the Parlor City Commons? (Select your top 3 choices)

Answered: 323 Skipped: 2

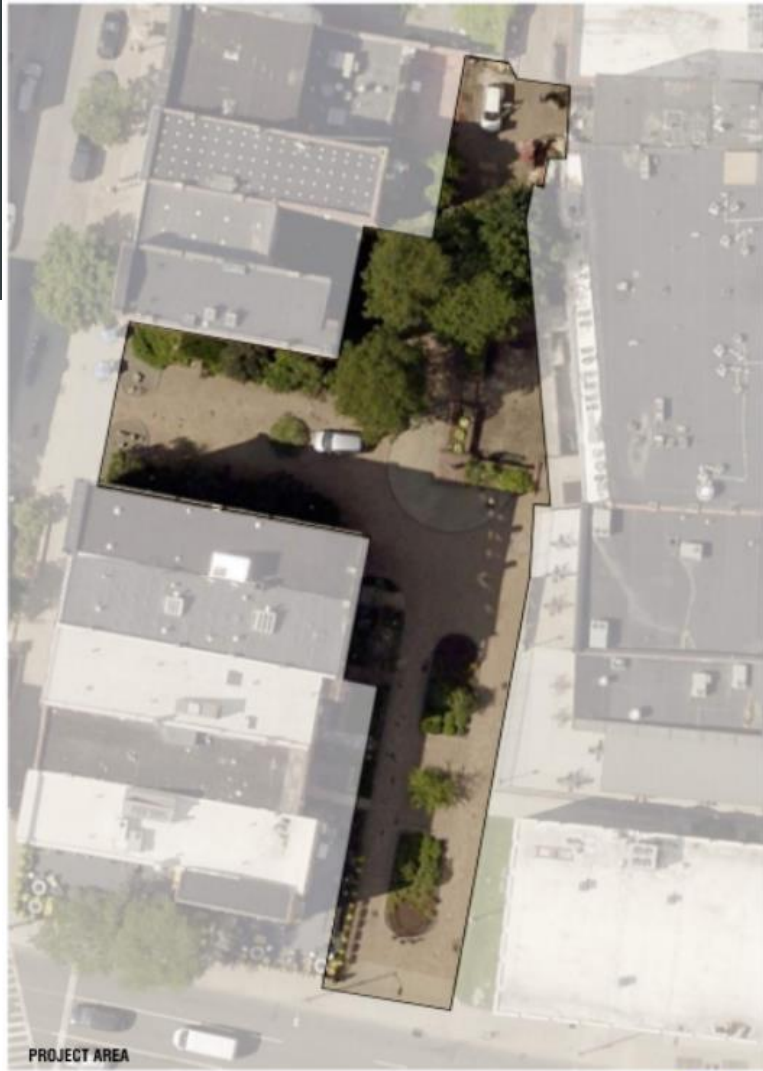


ANSWER CHOICES	RESPONSES
Solar powered lighting	19.81% 64
Green infrastructure (rain gardens, rain barrels, etc.)	31.58% 102
Trees, landscaping	55.42% 179
Decorative lighting	34.98% 113
Seating and tables	64.71% 209
Historic information and signage	13.62% 44
Wayfinding signage	4.95% 16
Fountain/water feature	27.55% 89
Informational kiosk/community bulletin board	8.36% 27
Bike racks	8.67% 28
Shade/ rain shelter	20.43% 66
Total Respondents: 323	



Parlor City Commons

Existing Conditions Survey

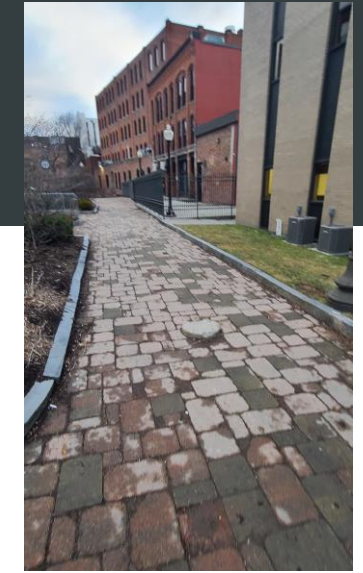
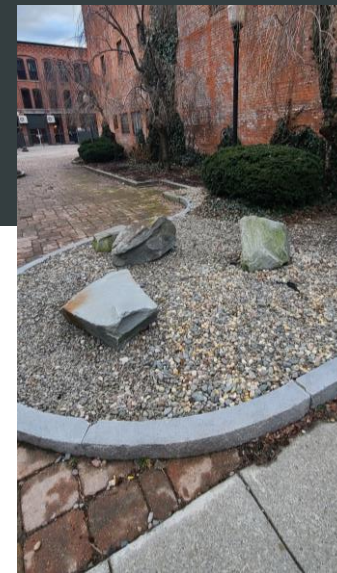
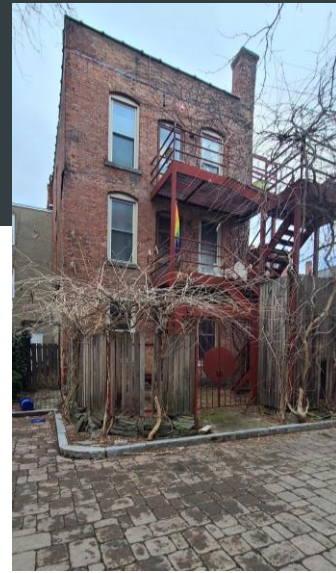


PROJECT AREA





Existing Conditions Photos



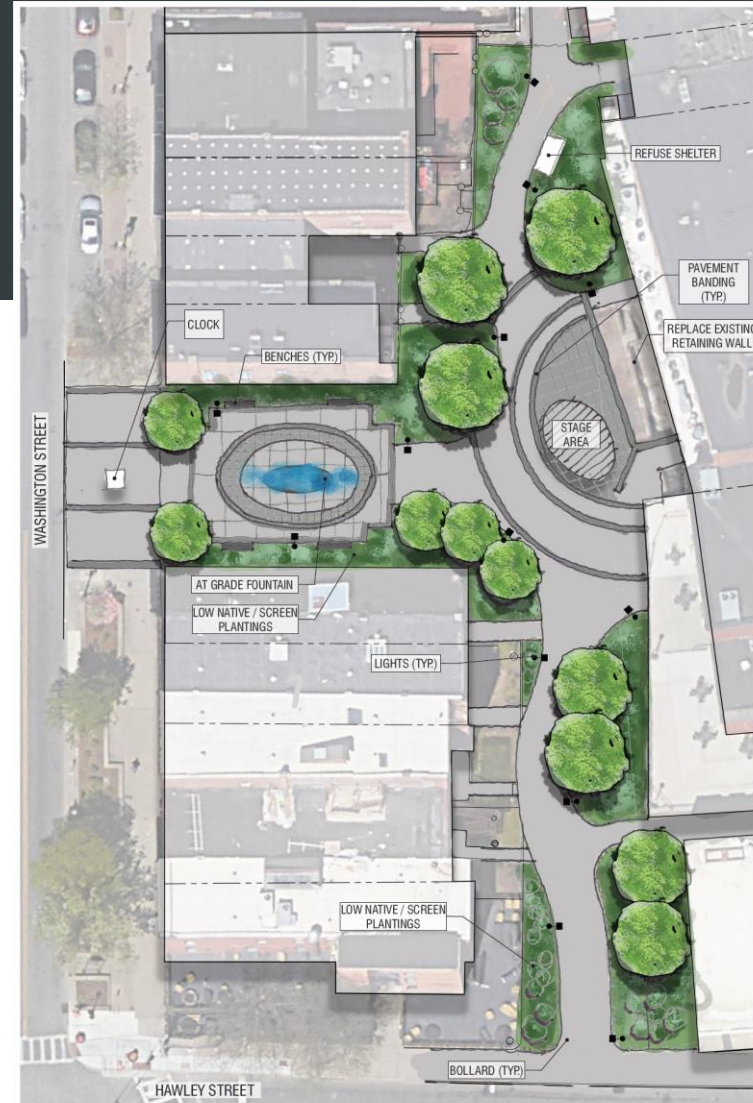


Parlor City Commons

Conceptual Ideas for Consideration



Concept 1

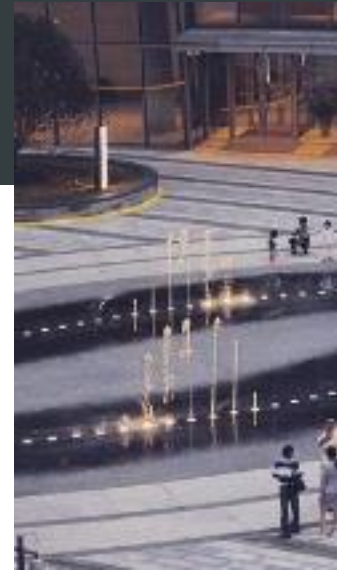
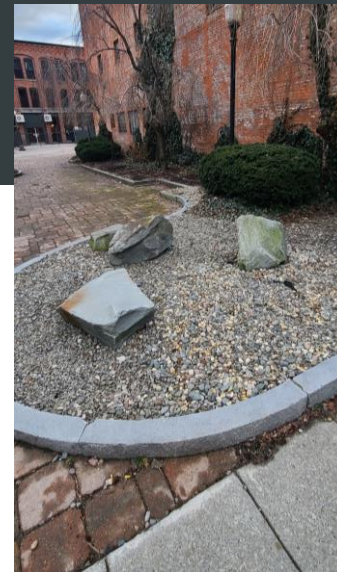


Concept 2



Precedent Fountains

Ideas for what a fountain could look like





Precedent Imagery

Ideas for what a stage could look like





Precedent Imagery

Ideas for overall look and feel

Most popular ideas outlined in **green**



What do you like?

What do you not like?

What do you wish was included?

What do you wish was not included?

Any other thoughts?

Email your comments to ecodev@cityofbinghamton.gov