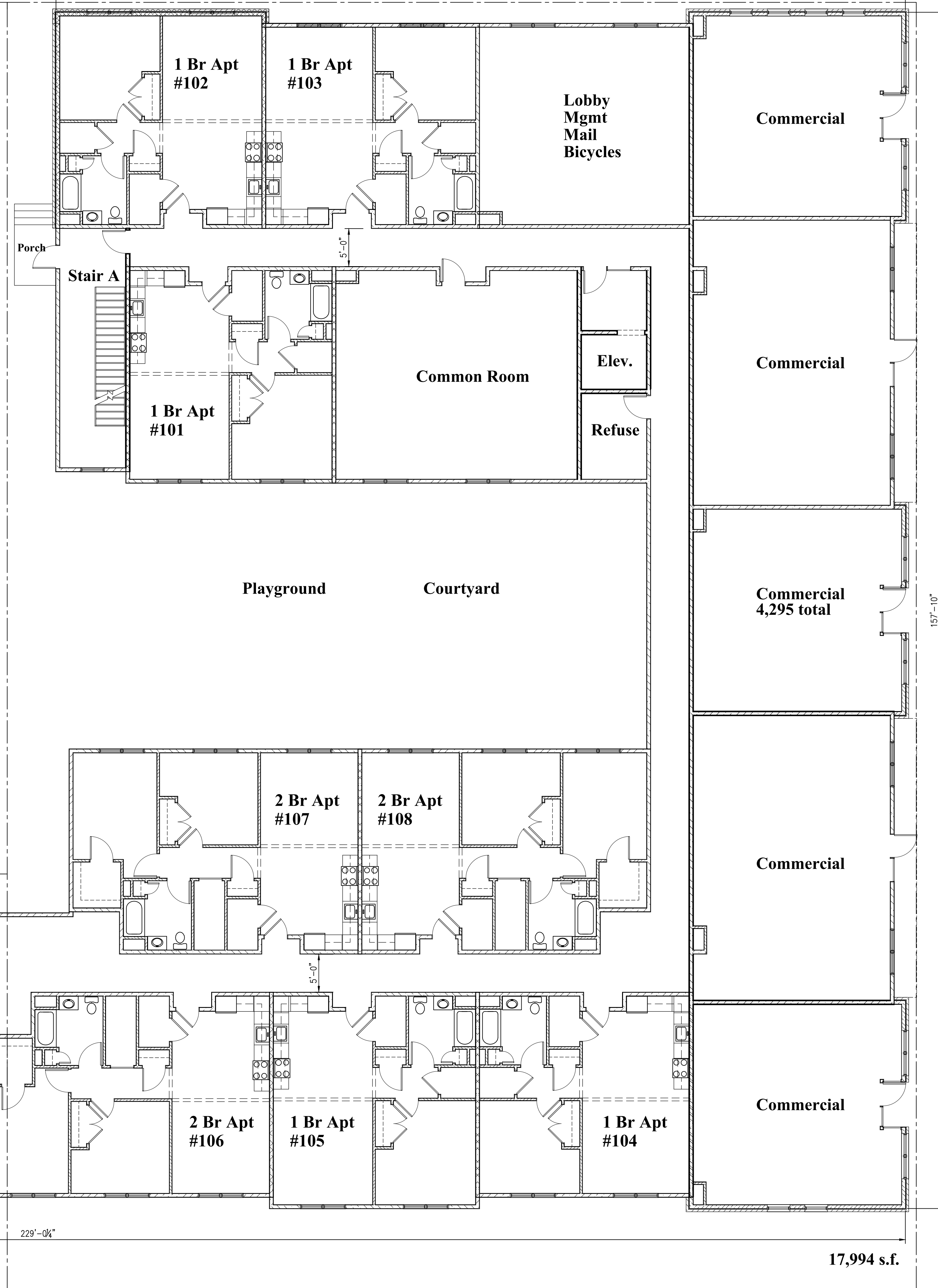


Chapman Street

112'-1/2"

Stadium Lofts - Residential Unit and Area Breakdown							
Floor #	1 Br Apartment Type 1a	1 Br Apartment Type 1b	1 Br Apartment Type 1c	1 Br Apartment Type 1d	2 Br Apartment Type 2a	2 Br Apartment Type 2b	Totals
	744 s.f. int	745 s.f. int	745 s.f. int	729 s.f. int	970 s.f. int	953 s.f. int	
1	3	0	0	2	0	3	8
2	5	3	2	3	1	5	19
3	5	3	2	3	1	5	19
4	5	3	2	3	1	5	19
<b>TOTALS</b>							
	18	9	6	11	3	18	65
Total Int Area	13392	6669	4470	8019	2910	17154	52,614

Minimum Bulk Storage of 20 s.f. is provided within each unit.  
 (7) Units will be Handicap Adapted for mobility impaired tenants per ICC/ANSI 117.1-2009 Type A units (10% of unit total)  
 (3) Units will be A/V adapted (4% of unit total)  
 All units are visitable and adaptable.



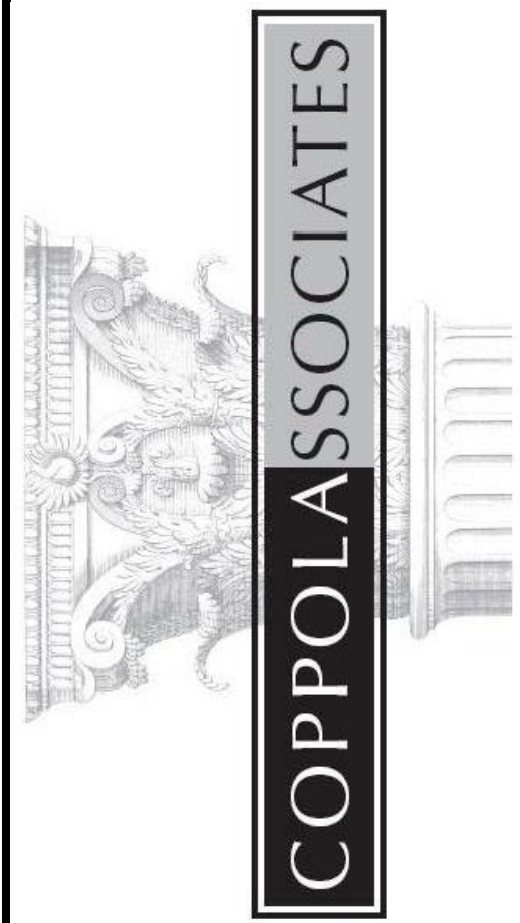
TYPICAL TAX MAP PROPERTY LINE

Henry Street  
157'-10"

Pine Street

17,994 s.f.

**1 First Floor Plan**  
**A1** Scale: 1/8" = 1'-0"



*Design, Architecture & Planning*  
 6 Old North Plank Road  
 Suite 101  
 Newburgh, NY 12550  
 TEL: 845-561-3559  
 FAX: 845-561-2051  
 ajcoppola@coppola-associates.com

LICENSE NUMBER: 018849

° PROPOSED MIXED USE/  
 MULTIFAMILY DWELLING FOR °

**Stadium Lofts**

City of Binghamton, NY

**Preliminary First Floor Plan**

REVISIONS

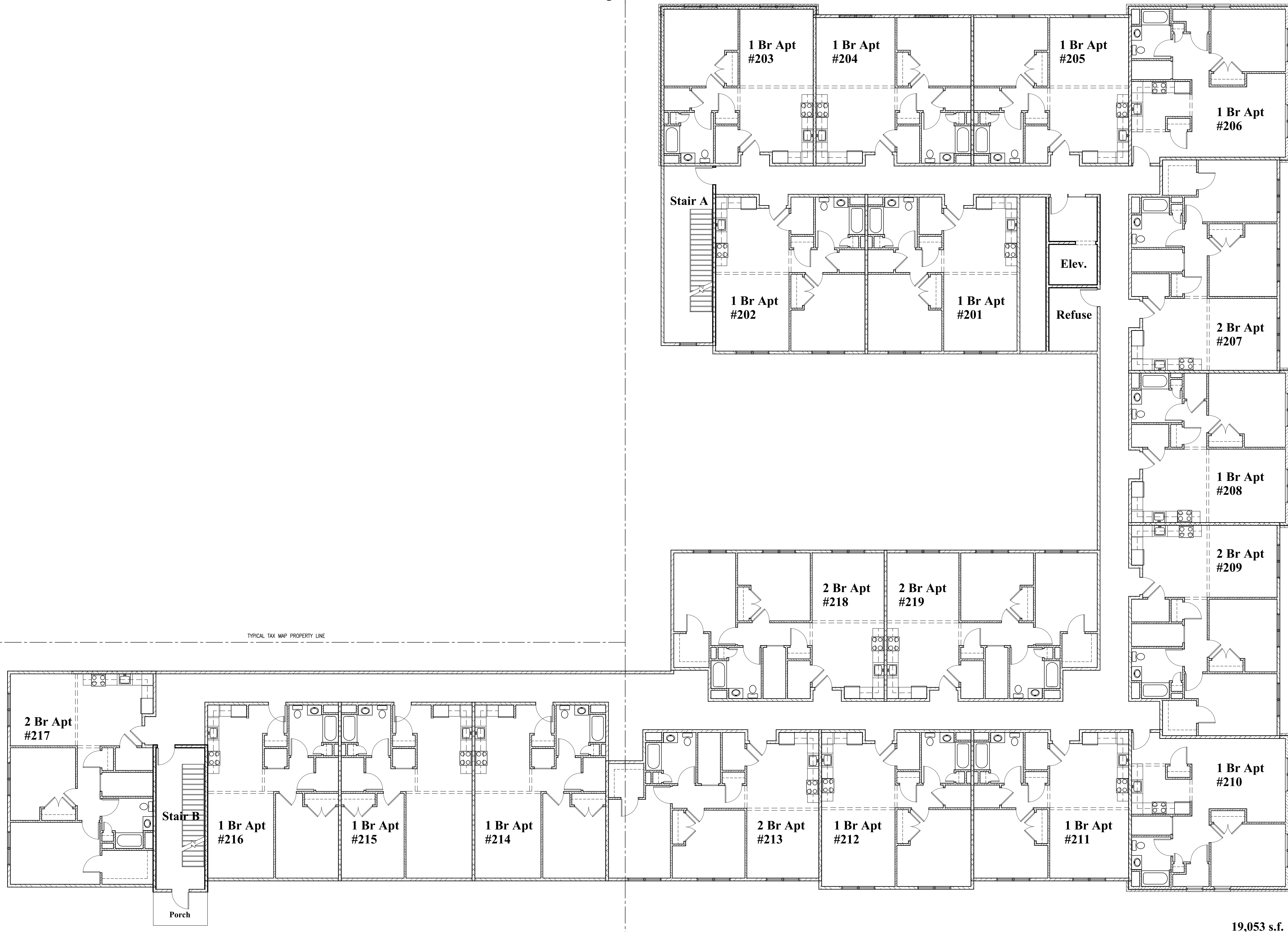
DATE  
 8/26/22  
 PROJECT NUMBER  
**22-00**  
 SHEET NUMBER

**A1**

Chapman Street

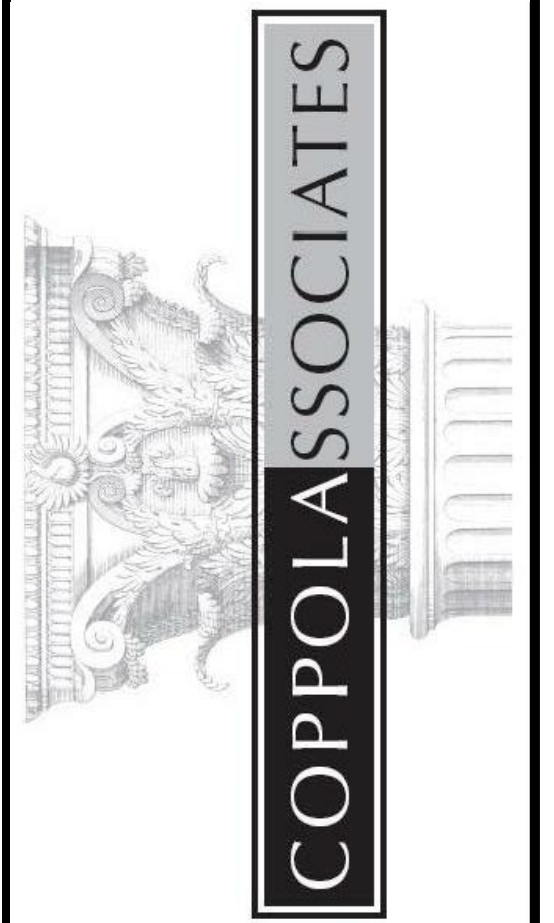
Pine Street

Henry Street



19,053 s.f.

**1** Second Floor Plan  
**A2** Scale: 1/8" = 1'-0"



*Design, Architecture & Planning*  
 6 Old North Plank Road  
 Suite 101  
 Newburgh, NY 12550  
 TEL: 845-561-3559  
 FAX: 845-561-2051  
 ajcoppola@coppola-associates.com

LICENSE NUMBER: 018849

° PROPOSED MIXED USE/  
MULTIFAMILY DWELLING FOR °

**Stadium Lofts**

City of Binghamton, NY

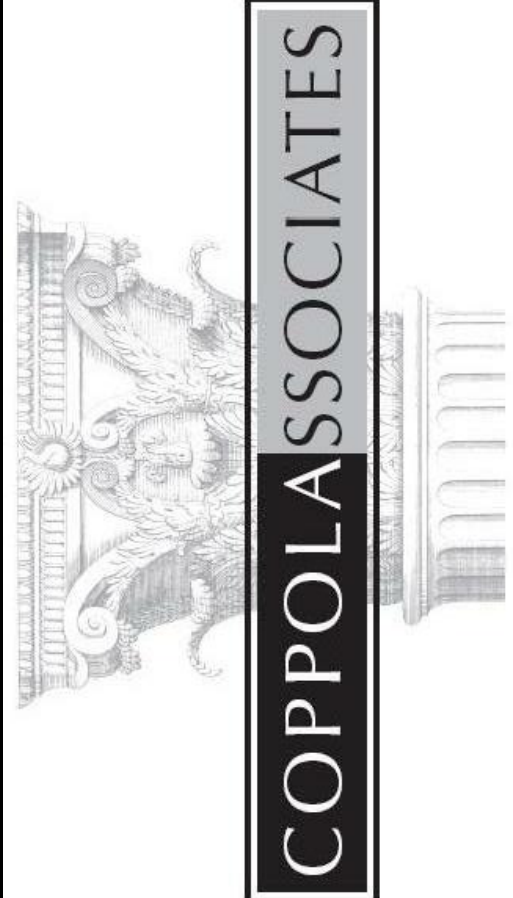
**Preliminary Second Floor Plan**

REVISIONS
DATE
8/26/22
PROJECT NUMBER
22-00
SHEET NUMBER

**A2**

**Materials & Colors:**

- 4" Brick- Glen Gery, Sunset Flashed
- Mortar- Gray
- Precast Concrete Lintels- Brownstone color
- Precast Base/Porches- Brownstone color
- Fibercement Siding- Hardie Iron Gray
- Fibercement Trims- Hardie Light Mist
- Fibercement Window Surrounds- White
- Fibercement Panels (Art Center)- Light Mist, Gray Slate
- Window Frames- Harvey Windows, Black
- Cornice/Fascia- White
- Aluminum Railings- White



*Design, Architecture & Planning*

6 Old North Plank Road  
Suite 101  
Newburgh, NY 12550  
TEL: 845-561-3559  
FAX: 845-561-2051  
ajcoppola@coppola-associates.com

LICENSE NUMBER: 018849

° PROPOSED MIXED USE/  
MULTIFAMILY DWELLING FOR °

**Stadium Lofts**

City of Binghamton, NY

**Preliminary Elevations**

REVISIONS

DATE

8/26/22

PROJECT NUMBER

**22-00**

SHEET NUMBER

**A3**



**1 Chapman Street Elevation**  
A3 Scale: 1/8" = 1'-0"



**2 Henry Street Elevation**  
A3 Scale: 1/8" = 1'-0"