

City of Binghamton ADA Transition Plan: Pedestrian Facilities in the Public Right-of-Way



June 2017

Prepared by the
Binghamton Metropolitan Transportation Study Staff

BMTS

For the City of Binghamton



June 2017

The preparation of this report was funded through grants from the Federal Transit Administration (FTA) and the Federal Highway Administration (FHWA). The views expressed herein are solely those of the Binghamton Metropolitan Transportation Study, and do not represent and official position of the FTA or FHWA.

Contents

Introduction.....	1
Legal Requirements	1
Identifying Barriers to Accessibility.....	2
Inventory and Rating.....	3
Inventory Summary.....	4
Removing Barriers to Accessibility	5
Schedule of Improving ADA Accessibility	5
New Construction and Alterations	5
ADA Coordinator.....	6
Public Input.....	6
Public Complaint/Grievance Process.....	6
Appendix.....	7
Appendix A: ADA Transition Plan Rating System	8
Appendix B: Maps of Rating of Sidewalks and Intersections	18
Appendix C: Table of Curb Ramp and Crossing Ratings at Intersections.....	21
Appendix D: Map of Intersection Identification Numbers	39
Appendix E: Public Complaint/Grievance Form	41

Introduction

The purpose of this ADA Transition Plan is to ensure that the City of Binghamton creates and maintains reasonable, accessible paths of travel in the public right-of-way for everyone, regardless of age or ability. Specifically, the plan will address curb ramps and crossings at intersections and sidewalks as they relate to ADA standards. ADA compliant accessibility is not only for individuals with mobility disabilities, but also for individuals with needs related to speech, cognitive, vision, and hearing disabilities.

The ADA Transition Plan identifies barriers of accessibility and prioritizes improvements that are to be made throughout the City to increase ADA compliance of public facilities. This plan also outlines the plans, policies, and programs necessary to enhance the overall pedestrian accessibility.

The City of Binghamton has already taken substantive steps to improve the accessibility of its sidewalks, curb ramps, and crossings. This plan will allow the City to continue to make a long-term commitment to improving the accessibility of pedestrian facilities.

Legal Requirements

The Americans with Disabilities Act (ADA) is a federal legislation that was enacted on July 26, 1990. It provides comprehensive civil rights protections to persons with disabilities in the areas of employment, state and local government services, and access to public accommodations, transportation, and telecommunications.

Title II of the ADA applies to public entities, such as state and local governments, and the programs, services, and activities they deliver. This includes ensuring that paths of travel in the public right-of-way are accessible according to ADA standards. Title II, Article 8, requires public entities to take several steps designed to achieve compliance with such ADA measures. This includes the mandate for the creation and implementation of an ADA Transition Plan. According to the ruling, the plan shall, at a minimum, include:

- A list of the physical barriers and their locations in a public entity's facilities that limit the accessibility of its programs, activities, or services to individuals with disabilities
- A detailed outline of the methods to be utilized to remove these barriers and make the facilities accessible
- The schedule for taking the necessary steps to achieve compliance with Title II
- The name/position of the ADA Coordinator responsible for the plan's implementation

The plan is to be updated periodically until all barriers to accessibility are removed. This directive applies to all public entities who employ 50 or more people, which means that the City of Binghamton must have an ADA Transition Plan. Doing so allows the City to further demonstrate their dedication to providing accessible facilities.

Identifying Barriers to Accessibility

There are many different obstacles that impact the accessibility of paths of travel in any city. Each of these obstacles makes it more challenging for people with disabilities to navigate city sidewalks or cross streets. This is considered unacceptable by both ADA standards and the City of Binghamton. The first step to remediating these inaccessible facilities is to identify the specific barriers of accessibility.

This transition plan considers sidewalks, curb ramps, and crossings at intersections as barriers to accessibility. When constructed or installed correctly, this infrastructure is not a barrier at all. In fact, it is the means through which great accessibility is provided. However, when sidewalks, curb ramps, or crosswalks are nonexistent or in poor condition, they become barriers. The images below show local examples of how these infrastructure act as a barrier to accessibility.



Example 1: Curb does not come flush with the road; sidewalks are uneven.



Example 2: Sidewalk and curb ramps are very uneven and crumbling; only one crosswalk is present.



Example 3: No truncated domes are present; crosswalk painting is faded and covered in debris.



Example 4: While truncated domes are present on the curb ramps, they are old and deteriorated.

There are very specific guidelines set forth by the ADA for sidewalks, curb ramps, and crosswalks. For example, sidewalks should be at least five feet wide, while shared-use sidewalks should be at least 10 feet wide. Walkways should also be even and easy to traverse, without large heaves or gaps. It is easy to see how these aspects of a sidewalk impact ADA accessibility. For example, a visually disabled or wheelchair-bound person would struggle to use an uneven sidewalk. Furthermore, a very narrow sidewalk would require someone to exit the walkway if two-way traffic occurs.

Curb ramps have more specific conditions which must be met to comply with ADA standards. Curb ramps should be provided where an accessible route crosses a curb. The slope of the ramp should not exceed a certain grade to ensure it is a gentle slope. The ramp should be a certain width, and should have truncated domes to provide a detectable warning to users. These are only a few of the characteristics which make a curb ramp accessible if met or inaccessible if not. Meanwhile, crosswalks should meet visibility standards, have a minimum width, and more.

Inventory and Rating

In order to determine what infrastructure poses a barrier to accessibility, comprehensive data collection was conducted throughout the entire city. During field observations, each city sidewalk and curb ramp was inspected and rated on its accessibility. An overview of the rating system used for rating sidewalks, curb ramps, and crosswalks is shown below.

Figure 2: Rating System for Sidewalks, Curb Ramps, and Crossings

Rating	Description of Rating
1 – Not Applicable	A facility not considered to require accessibility. For example, limited-access highways, no sidewalk present.
2 – Not Accessible	Significant discontinuity, such as steps, no ramps, heaving, vertical displacement, flooding, excessive debris.
3 – Partially Accessible	Not designed to current standards. For example, problems with geometry of sidewalks, ramps, and landings, no detectable warnings, handrails, some debris present.
4 – Accessible	May need additional improvements, such as no detectable warnings at curb ramp locations or insufficient width.
5 – Fully Accessible	Designed to current standards, and presence of detectable warnings at curb ramp locations.

This rating is adapted from the New York State Department of Transportation’s ADA Transition Plan. The plan and a detailed description of the rating system can be found in Appendix A. While this rating system is comprehensive, it is simple to understand and can be easily used to make objective observations of facilities. Sidewalk ratings were collected by walking each segment of road in the City and ranking its sidewalks. Curb ramp and crosswalk ratings were collected by rating each curb ramp and crosswalk at an intersection during field visits. An average was taken from all curb ramp and crosswalk ratings at each intersection so that one rating represents the entire intersection.

Inventory Summary

The maps in Appendix B show the ratings of sidewalks, curb ramps, and crossings as they relate to ADA standards. The tables in Appendix C show each intersection in the City and its respective curb ramp and crossing rating. Appendix D is a map of each intersection labeled with its identification number (ID), which can be used to reference the table in Appendix C. Below is a table summarizing the results gathered from the sidewalk, curb ramp, and crossing inventory.

Figure 3: Inventory Summary

Sidewalk Rating	Miles of Sidewalk	Curb Ramp & Crossing Rating	# of Curb Ramps & Crossings
1 – Not Applicable	39.70	1 – Not Applicable	252
2 – Not Accessible	2.91	2 – Not Accessible	43
3 – Partially Accessible	11.35	3 – Partially Accessible	147
4 – Accessible	32.51	4 – Accessible	315
5 – Fully Accessible	79.39	5 – Fully Accessible	500
Total	165.86	Total	1,257

Overall, the majority of sidewalks in the City of Binghamton are accessible, with most being fully accessible. In fact, over half of the sidewalks in the City received the highest accessibility rating. Meanwhile, less than three miles of sidewalk were rated as not accessible. Sidewalks rated not applicable depict streets where there are no sidewalks present. These are places where a sidewalk may not be deemed necessary or appropriate. The map of sidewalk ratings shown in Appendix A provides shows in detail the ratings of each sidewalk.

Curb ramps and crossings at intersections can also be said to be mostly accessible, with a large amount being fully accessible. In fact, 500 intersections were rated as fully accessible, with over 300 rated as accessible. There are 43 intersections which are considered not accessible. There are 252 intersections which were rated as not applicable. This is because they were located in areas where a curb ramp and crosswalk were not necessary or logical due to the absence of sidewalks, road configuration, or some other factor.

When looking at the maps and tables included in this plan, it can be seen that the City of Binghamton’s commitment to providing accessible paths of travel in the public right-of-way has resulted in most of the City’s pedestrian facilities being accessible. However, a small portion of pedestrian facilities that are not accessible or only partially accessible are still present in the City. Thus, the City will continue its progress towards improving accessibility of the City through the methods described in the rest of this plan.

Removing Barriers to Accessibility

The City of Binghamton identifies and eliminates barriers to accessibility as soon as possible in the most effective way permitted. To guide this process, the city has developed a schedule for remediating inaccessible infrastructure as well as established design standards.

Schedule of Improving ADA Accessibility

The City of Binghamton makes efforts to improve the ADA Accessibility of pedestrian facilities in the public right-of-way as opportunities allow. CHIPS (Consolidated Local Street and Highway Improvement Program) and local bond money are used to complete street projects. Unfortunately, like many municipalities, funding for street projects is limited and often doesn't provide enough money to complete as many projects as desired. This makes it difficult to dedicate significant sums of money solely towards replacing or improving sidewalks, curb ramps, and crosswalks.

For this reason, projects for improving accessibility are rolled into the City's general street reconstruction and maintenance schedule. Currently, the City is able perform construction on approximately 15 miles of road per year. When a street is slated to be reconstructed or milled and paved, the City of Binghamton replaces sidewalks, curbs, and crosswalks as needed to improve accessibility according to ADA standards. Many crosswalks are also repainted generally as needed every year. Street reconstructions are performed on a need-based schedule, while milling and paving projects are prioritized using the Cornell Local Roads Program and selected for construction each year. This transition plan supplements the Cornell Local Roads prioritization to provide more guidance on which streets to improve. Following this construction schedule for improving ADA accessibility, it will likely take several years to bring every single sidewalk, curb ramp, and crossing up to ADA standards. Thus, this plan will be updated periodically until all non-compliant facilities have been brought into conformity.

When extra funding opportunities for street projects or specific ADA-related projects arise, the City will make improvements to high priority infrastructure that may have otherwise gone unfixed until the regular project schedule allowed. This plan will guide such projects.

Should a sidewalk require immediate attention, the responsibility to remediate the issue lies with the property owner, as set forth by the City Ordinance. The Engineering Department of the City of Binghamton offers a Curb & Sidewalk Assistance Program, which provides financial assistance to property owners seeking to reconstruct sidewalks along their properties.

New Construction and Alterations

When there is to be new construction or alterations involving curb ramps, and sidewalks, it is important that correct design standards are met. To ensure this, the City of Binghamton uses the [Americans with Disabilities Act Accessibility Guidelines](#) and the [Proposed Guidelines for Pedestrian Facilities in the Public Right-of-Way](#) published by the U.S. Access Board to guide all project design. The City uses the NYSDOT Standards for the installation of new curb ramps and sidewalks.

Whenever new construction or alterations are initiated, compliance is required to the extent practicable within the scope of the project. However, there may be circumstances when it is technically impractical to provide full compliance with guidelines. Whenever pedestrian facilities cannot fully meet the standards outlined in the ADA Guidelines, a determination of each structural impracticality or technical infeasibility should be documented in the project record. It is important to note that this plan's inventory and rating process may not account for such impracticalities and could still show a low rating for a facility even when all practical solutions have already been sought.

ADA Coordinator

The official responsible for the implementation of the ADA Transition Plan is the ADA Coordinator. The ADA Coordinator's name and contact information are below:

Ray Standish, City Engineer
Phone: 607-772-7007
Email: rstandish@cityofbinghamton.com
Address: Binghamton City Hall
38 Hawley Street
Binghamton, NY 13901

It is important to note that the individual serving as the ADA Coordinator may change throughout the life of this plan as the individual acting as the City Engineer changes over time.

Public Input

The ADA requires that there is an opportunity for the public to provide input on the Transition Plan. To meet that requirement, the City of Binghamton invited the public to attend the City Council meeting in which this ADA Transition Plan was approved and adopted (INSERT DATE OF MEETING). Comments and suggestions regarding the plan were then addressed in advance of this plan's adoption.

Public Complaint/Grievance Process

The public complaint process is an integral part of the transition plan, as it helps drive more specific prioritization of ADA compliant improvements. Formal complaints or grievances regarding the ADA compliance of public facilities in the City's right-of-way can be made directly to the City of Binghamton's ADA Coordinator using the grievance form in Appendix E. This form can also be found on the City of Binghamton's website under the Engineering Department's home page. The form may be filled out and mailed to the ADA Coordinator or brought to the Engineering Department in person. The ADA Coordinator will follow-up with the complainant with a formal response of the department's findings. All complaints or requests will be kept on file, along with the response or action taken.

Appendix

Appendix A: ADA Transition Plan Rating System
Excerpted from the 2016 New York State
Department of Transportation **ADA Transition Plan**

Appendix A – Rating Scale

RATING SCALE FOR ACCESSIBILITY OF PEDESTRIAN FACILITY SEGMENTS OR POINTS ALONG STATE HIGHWAYS

Below are examples of the Rating Scale 1-5, with 5 being the best.

Rating 1 - NOT APPLICABLE - A facility or feature is not required to be accessible. If a feature is part of an accessible route, it is required to be accessible.

Rating 2 - NOT ACCESSIBLE - Accessibility for Persons with Disabilities is impossible or very difficult

Sidewalks, Multi-use trails -

- There are significant obstacles such as:
- > 50' of unpaved walkway
- Significant heaving or vertical displacement
- Significant flooding
- Vegetation growing over walkway
- Steps within walkway
- Less than 3' of width around obstacles (5' generally overall)





Intersections - curb ramps and crosswalks

- No curb ramps
- Street crown very steep,
- Crosswalk pavement severely cracked or distressed

Crosswalks



Curb Ramps





Rating 3 - PARTIALLY ACCESSIBLE Not to current standards. Accessibility is possible, but there are problems

Sidewalks, Multi-use trails -

- Small heaving or vertical displacement, ▪ No handrails on walkway ramps, etc.
- Major maintenance issues (gravel accumulation)



Intersections - curb ramps and crosswalks

- Problems with geometry,
- Generally less than 5' width
- No detectable warnings
- Curb ramps not compliant as per Standard Sheets
- Major maintenance issues (gravel accumulation)

Crosswalks



Curb Ramps





Rating 4 - ACCESSIBLE - May need additional improvements

Sidewalks, Multi-use trails -

- Generally minor maintenance problems
- Minor insufficient width



Intersections - curb ramps and crosswalks

- Generally minor maintenance problems
- Minor insufficient width

Crosswalks



Curb Ramps





Rating 5 -FULLY ACCESSIBLE TO CURRENT STANDARDS

Sidewalks, Multi-use trails -



Intersections - curb ramps and crosswalks

Crosswalks

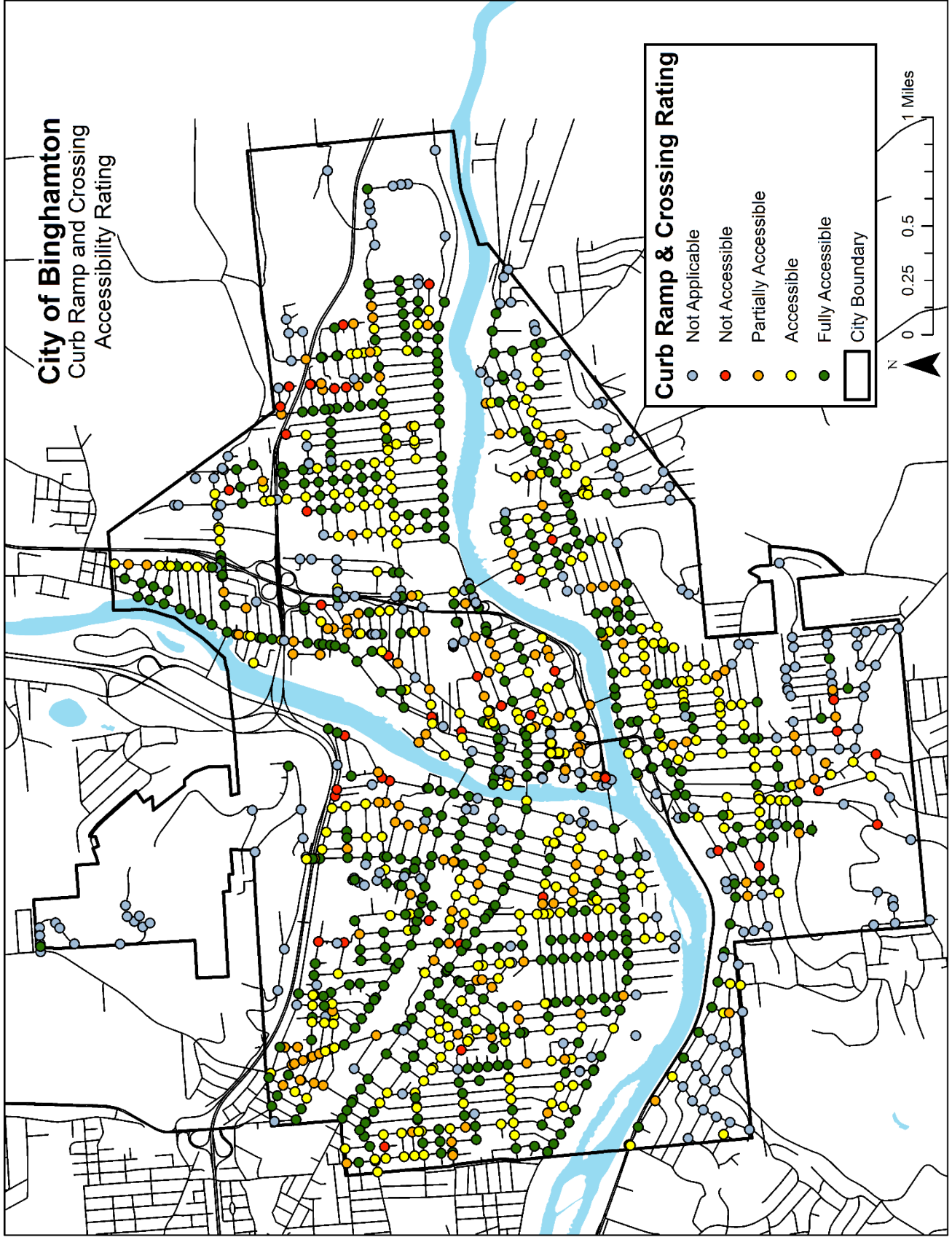


Curb Ramps



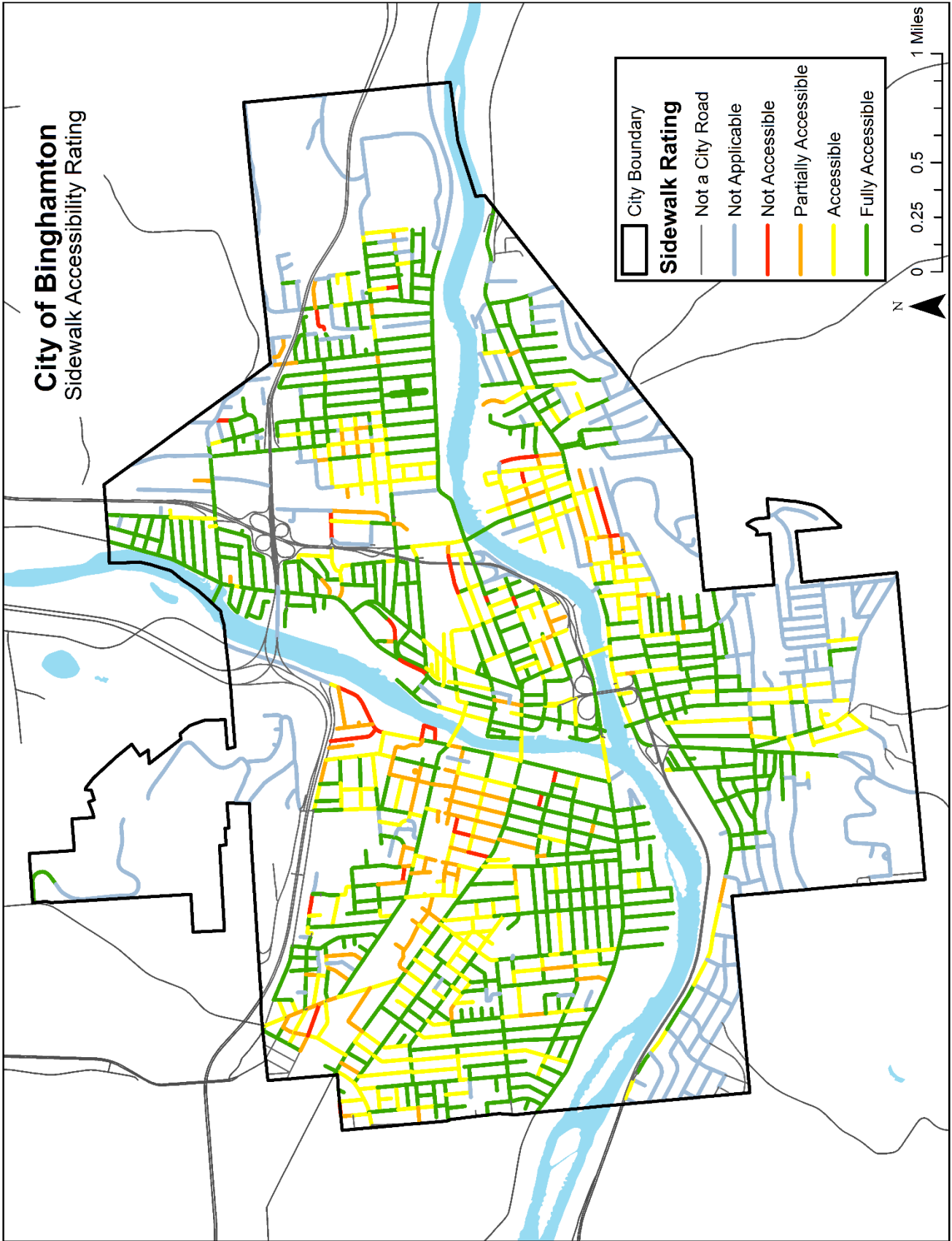


Appendix B: Maps of Rating of Sidewalks and Intersections



Data Collected 2017

City of Binghamton Sidewalk Accessibility Rating



Data Collected 2017

Appendix C: Table of Curb Ramp and Crossing Ratings at Intersections

ID	Intersection Name	Average Rating
0	Liberty & Eldredge	1
1	East Middle & Moeller	1
2	Halford & Saint Cyril	5
3	Lawton & Cleveland	4
4	Lawton & End	3
5	Park & Harrison	5
6	Park & Schubert	5
7	Judson & Glenwood	3
8	Judson & Lorraine	3
9	Lucy & John	5
10	Lucy & Telegraph	4
11	Maple & Cypress	3
12	Maple & Prospect	4
13	Iva & Conklin	5
14	Iva & Delavan	1
15	Griffis & Fairview	4
16	Pleasant & Chenango	5
17	Flower & Spellicy	5
18	Charles & Laurel	1
19	Charles & Vermont	1
20	Athan & Earle	1
21	Athan & Spring	1
22	Columbus & Fayette	3
23	Parking Lot & North	1
24	Parking Lot & Oak	1
25	Pratt & Upper Vine	5
26	Centenary & Court	4
27	Centenary & Hawley	4
28	Clifford & Beman	3
29	Clifford & Brandywine	2
30	Hillside & Clarence	4
31	Hillside & Phinn	4
32	Dellwood & Larchmont	1
33	Kennedy & Home	2
34	Erie & Titchener	3
35	Corliss & Hotchkiss	5
36	Corliss & Sheldon	5
37	Frank & Crandall	4
38	Brownson & Bevier	5
39	Brookside & Clifton	1

40	Bellevue & Grand	4
41	Clayton & Leon	1
42	Clayton & Moeller	2
43	Annette & Grand	5
44	Cedar & College	4
45	Cedar & Main	5
46	Linden & Chenango	5
47	Linden & State	4
48	Parking Lot & Henry	1
49	Euclid & Newton	4
50	Euclid & Vestal	4
51	Miles & Emma	3
52	Miles & Tracy	4
53	May & Charles	2
54	May & Colfax	4
55	Elizabeth & Gerard	1
56	Elizabeth & Unnamed Street	1
57	Park Terrace & Park	2
58	Deerfield & Clifton	1
59	Aberystwyth & Helen	5
61	Forest & Espial	1
62	Forest & Farview	1
63	Arthur & Main	5
64	Arthur & Seminary	2
65	Platt & Bigelow	5
66	Nancy & Midwood	1
67	Cohoes & Mohawk	1
68	Cohoes & Woodland	1
69	Oneonta & Woodland	1
70	Giles & Crary	4
71	Giles & Matthews	4
72	Park & Grand	5
73	Park & Main	5
74	Center & Dwight	3
75	Center & Henry	5
76	Elizabeth & Gerard	1
77	Francis & Market	1
78	Bellevue & Gay	4
79	Bellevue & Schubert	4
80	Duffy & Patricia	5
81	King & Saint John	3

82	King & Walnut	4
83	Carlton & Hancock	4
84	Carlton & Vestal	4
85	Packard & Ridge	1
86	Catherine & Clarke	5
87	Catherine & Laurel	4
88	Pierce & Payne	1
89	Columbia & James	4
90	Columbia & Newton	4
91	Brick & State	4
92	Murphy & Charles	4
93	Murphy & West	4
94	Maria & Park	5
95	Gaines & Front	2
96	Gaines & Oak	3
97	Everett & Elm	4
98	Everett & Starr	5
99	Powderhouse & Clifton	1
100	Alley & Academie	1
101	Alley & Broad	1
102	Lisle & Carroll	4
103	Lisle & Exchange	3
104	Gay & Orton	4
105	Lanesboro & Sherwood	1
106	Lanesboro & Woodland	1
107	Overland & Dewey	4
108	Overland & Harding	1
109	Iva & Burr	5
110	Iva & Decatur	1
111	Maple & Allendale	5
112	Maple & Pennsylvania	4
113	Louisa & Hill	4
115	Dennison & Chenango	5
116	Dennison & State	4
117	Powers & Burr	1
118	Druid & Helen	5
119	Chambers & Conklin	5
120	Hallam & Rush	1
121	Driveway & Harding	1
122	Phelps & Saint Cyril	3
123	Phelps & West	5

124	Moran & Gillen	1
125	Minden & Schubert	4
126	New & Conklin	5
127	Barney & Payne	1
128	Griswold & Bevier	4
129	Moffatt & Morgan	5
130	Mulberry & Chenango	5
131	Mulberry & State	4
132	Farview & The Circuit	5
133	Penny & Ridge	1
134	Bromley & State	4
135	Grant & Garfield	2
136	Penston & Westerly	4
137	Chelsea & Dickinson	1
138	East Middle & Moeller	1
139	Haendel & Laurel	4
140	Haendel & Mendelssohn	1
141	Doubleday & Emmett	5
142	Marilyn & Earle	1
143	Marilyn & Spring	1
144	Balcom & Jarvis	2
145	Bump & Montgomery	1
146	Parsons & Mill	5
147	Parsons & Rollins	4
148	Gordon & Helen	5
149	Manier & Pennsylvania	4
150	Manier & Rush	4
151	Asbury & Main	5
152	Lanesboro & Sherwood	1
153	Melcher & Bevier	1
154	Brown & Glenwood	3
155	Brown & Matthews	1
156	McDonald & Front	5
157	Mersereau & Chenango	5
158	Howard & Howard	4
159	Howard & Robinson	4
160	East & Evans	3
161	East & Grand	5
162	Afton & Conklin	5
163	Jones & Holland	4
164	Janette & Clinton	5

165	Janette & Hazel	4
166	Burton & Mason	3
167	Baltimore & Bond	3
168	Baltimore & Duke	3
169	Gold & Oliver	5
170	Burton & Mason	4
171	Pig & Wagner	1
172	Congdon & Exchange	3
173	Congdon & Myrtle	2
174	Centre (Centennial Plaza) & Chenango	5
175	Evelyn & Esther	4
176	Evelyn & McNamara	5
177	Gary & Clarke	5
178	Gary & Laurel	4
179	Chapel & Oak	4
180	Perry & Thorp	4
181	Cary & Chenango	5
182	Genesee & Newton	4
183	Genesee & Vestal	4
184	Prague & Holland	5
185	Carhart & Floral	5
186	Carhart & Grand	4
187	Olmstead & Deforest	4
188	Franklin & Front	2
189	Franklin & Valley	5
190	Driveway & Karlada	1
191	Devon & Larchmont	1
192	Minerva & Grand	5
193	Minerva & Schubert	4
194	Lourdes Hospital & Unnamed Street	1
195	Catherine & Griswold	3
196	Gregory & Starr	1
197	Bradley & Fairview	4
198	Bradley & Glen	5
199	Addison & Clapham	1
200	Brintnall & Grand	5
201	Brintnall & Main	5
202	Delmar & Saratoga	4
203	Brownell & Cypress	5
204	Brownell & Prospect	4

205	Briar & Leroy	3
206	Briar & Riverside	5
207	Gerard & Walnut	3
208	Munsell & Chenango	2
209	Munsell & Liberty	4
210	Pearl & James	4
211	Pearl & Newton	5
212	Merrick & East	1
213	Merrick & Fairview	3
214	Connecting Road & The Arena	4
215	Connecting Road & The Arena	4
216	Jay & Court	5
217	Jay & Hawley	4
218	Hughes & Home	3
219	Nash & Fairview	5
220	Mountain & Hotchkiss	3
221	Markay & Prospect	2
222	Chadwick & Vestal	1
223	Belknap & Emma	3
224	Belknap & Glenwood	3
225	Orton & Jerome	4
226	Orton & Mozart	3
227	Pleasant & Truesdell	3
228	Goethe & Beethoven	5
229	Goethe & Schiller	5
230	Baxter & Glenwood	3
231	Ireland & Clinton	5
232	Driveway & Montgomery	1
233	Afton & Dewey	4
234	Brevity & Helen	1
235	Livingston & Conklin	5
236	Livingston & Vestal	4
237	Academie & Bevier	1
238	Junior & Helen	3
239	Junior & Kneeland	5
240	Park & Grand	5
241	Park & Schubert	5
242	New & Vestal	4
243	Miles & Emma	3

244	Miles & Glenwood	3
245	Burlington & Sherwood	1
246	Burlington & Woodland	1
247	Andrews & Frederick	5
248	Andrews & Robinson	4
249	Pig & Wagner	1
250	Atherly & Holmes	1
251	Pearne & Liberty	5
252	Pearne & Roberts	5
253	Edgecomb & Highland	4
254	Edgecomb & Riverside	5
255	Ball & Roosevelt	5
256	Ball & State	3
257	Allen & Chenango	5
258	Allen & State	4
259	Ogden & Chenango	4
260	Elizabeth & Oakridge	1
261	Edgewood & Mill	1
262	Meadow & Murray	3
263	Meadow & Mygatt	5
264	Gates & Home	4
265	Boulevard & Matthews	1
266	Lockwood & Chenango	4
267	Irving & Chenango	5
268	Green & Chenango	3
269	Century & Wagner	1
270	Merritt & East	2
271	Parking Lot & Roberts	1
272	Depot & Prospect	1
273	Charles & Thorp	5
274	Matis & Clinton	5
275	2nd & Alfred	3
276	2nd & Tompkins	5
277	Abbott & Broad	4
278	Abbott & Ely	2
279	Abbott & Louisa	5
280	Abbott & Moeller	5
281	Aldrich & Allendale	4
282	Aldrich & Brookfield	5
283	Aldrich & Chadwick	5
284	Aldrich & Denton	1

285	Aldrich & Ellsworth	1
286	Aldrich & Overbrook	2
287	Aldrich & Pennsylvania	4
288	Aldrich & Rush	4
289	Alfred & Conklin	3
290	Alfred & Evans	3
291	Alfred & Grand	5
292	Alice & Court	5
293	Alice & Robinson	4
294	Allendale & Kendall	4
295	Allendale & Moore	1
296	Allendale & Overbrook	5
297	Amsbry & Chenango	5
298	Amsbry & State	5
299	Aquinas & Highland	4
300	Aquinas & Mozart	5
301	Ardsley & Berwick	5
302	Ardsley & English	5
303	Ardsley & Fairview	5
304	Ardsley & Garden	1
305	Ardsley & Grandview	5
306	Ardsley & Haskins	4
307	Ardsley & Summit	1
308	Armory & Westmoor	5
309	Audubon & Ivanhoe	4
310	Audubon & Jutland	1
311	Audubon & Kenilworth	1
312	Audubon & Larchmont	1
313	Avon & Riverside	5
314	Ayres & Chapin	5
315	Ayres & Murray	3
316	Ayres & Oak	4
317	Ayres & Saint John	4
318	Ayres & Walnut	5
319	Baird & Chenango	5
320	Baird & Roosevelt	5
321	Baird & State	3
322	Baldwin & Belden	4
323	Baldwin & Conklin	5
324	Baldwin & Jackson	5
325	Baldwin & Webster	4

326	Ballard & Chamberlain	2
327	Ballard & Gray	3
328	Ballard & Moody	3
329	Ballard & Waldorf	2
330	Baxter & Cliff	5
331	Baxter & Holland	4
332	Baxter & Johnson	4
333	Baxter & Ronan	4
334	Baxter & Lorraine	3
335	Bayless & Brook	4
336	Bayless & Rexford	1
337	Bedford & Conklin	5
338	Bedford & Lamont	4
339	Bedford & Thompson	3
340	Beethoven & Bennett	5
341	Beethoven & Davis	5
342	Beethoven & Haendel	5
343	Beethoven & Highland	5
344	Beethoven & Jefferson	3
345	Beethoven & Johnson	5
346	Beethoven & Lathrop	5
347	Beethoven & Leroy	5
348	Beethoven & Lincoln	5
349	Beethoven & Main	5
350	Beethoven & Mendelssohn	5
351	Beethoven & Schubert	5
352	Beethoven & Seminary	5
353	Beethoven & Seminary	4
354	Belden & Broome	2
355	Belden & Hayes	5
356	Belden & Home	4
357	Belden & Homer	3
358	Belden & Moore	1
359	Belden & Otsenigo	5
360	Belden & Unnamed Street	1
361	Belden & Tompkins	5
362	Beman & Frederick	3
363	Beman & State	3
364	Bennett & Chestnut	4
365	Bennett & Laurel	5

366	Bennett & Millard	5
367	Bennett & Rotary	5
368	Bennett & Saint John	4
369	Berlin & Field	5
370	Berlin & Grace	5
371	Berwick & Court	5
372	Bevier & Broad	4
373	Bevier & Broad	4
374	Bevier & Leon	1
375	Bevier & Moeller	4
376	Bevier & Ramp	5
377	Bevier & Smith	4
378	Bevier & Travis	4
379	Bevier & Unnamed Street	1
380	Bevier & Ramp	5
381	Bevier & Ramp	5
382	Bevier & State	5
383	Bevier & State Hwy 7	5
384	Bevier & State Hwy 7	5
385	Bevier & Chenango	5
386	Bevier & State	5
387	Bevier & Yager	3
388	Bigelow & Chamberlain	5
389	Bigelow & Court	5
390	Bigelow & Frederick	5
391	Bigelow & French	5
392	Bigelow & Gray	5
393	Bigelow & Moody	5
394	Bigelow & Wilcox	5
395	Bigelow & Waldorf	5
396	Bigelow & Robinson	5
397	Bigelow & Whiting	3
398	Bingham & Louisa	5
399	Birch & Conklin	5
400	Birch & Hancock	3
401	Birch & Vestal	3
402	Blackstone & Hawthorne	4
403	Blackstone & Ivanhoe	3
404	Blackstone & Jutland	1
405	Blackstone & Kenilworth	1
406	Blackstone & Larchmont	1

407	Blanchard & Chenango	5
408	Blanchard & Roosevelt	5
409	Blanchard & State	4
410	Bond & Conklin	5
411	Bond & Delavan	4
412	Bond & Richmond	5
413	Brandywine & Eldredge	4
414	Brandywine & Henry	4
415	Brandywine & Ramp	1
416	Brandywine & Frederick	1
417	Broad & Catherine	4
418	Broad & Court	5
419	Broad & Frederick	4
420	Broad & George	5
421	Broad & Grant	5
422	Broad & Hill	4
423	Broad & I 81	1
424	Broad & I 81	1
425	Broad & Unnamed Street	1
426	Broad & Ramp	4
427	Broad & Ramp	4
428	Broad & Robinson	4
429	Broad & Spellicy	5
430	Broad & William	4
431	Broad & Unnamed Street	1
432	Broadmoor & Wagner	1
433	Brook & Corbett	2
434	Brookfield & Kendall	5
435	Brookfield & Moore	5
436	Brookfield & Overbrook	5
437	Broome & Conklin	5
438	Broome & Jackson	5
439	Broome & Webster	3
440	Burr & Conklin	5
441	Burr & Lamont	4
442	Burr & Payne	4
443	Burr & Thompson	4
444	Burton & Howard	4
445	Burton & Moeller	4
446	Campbell & Vincent	4

447	Campbell & Riverside	5
448	Carroll & Court	5
449	Carroll & Hawley	5
450	Carroll & Henry	3
451	Carroll & Pine	2
452	Catherine & Ely	4
453	Catherine & Louisa	5
454	Catherine & Moeller	4
455	Century & Robinson	1
456	Chadwick & Kendall	3
457	Chadwick & Moore	5
458	Chadwick & Vestal	5
459	Chapin & Gerard	5
460	Chapin & Leroy	4
461	Chapin & Main	5
462	Chapin & North	5
463	Chapin & Riverside	5
464	Chapin & Seminary	5
465	Chapin & Vincent	4
466	Chapman & Pine	3
467	Charles & Clinton	5
468	Charles & Field	3
469	Charles & Grace	5
470	Charles & Unnamed Street	1
471	Charles & Seymour	2
472	Charlotte & Hamilton	3
473	Charlotte & Florence	3
474	Charlotte & Hamilton	4
475	Charlotte & Jarvis	5
476	Chenango & Deforest	5
477	Chenango & Eldredge	3
478	Chenango & Frederick	5
479	Chenango & Henry	5
480	Chenango & I 81	4
481	Chenango & I 81	1
482	Chenango & Lewis	4
483	Chenango & Lyon	4
484	Chenango & Morgan	5
485	Chenango & Sturges	5
486	Chenango & Ramp	4
487	Chenango & Robinson	3

488	Chenango & State	5
489	Chenango & State	5
490	Chenango & State	5
491	Chenango & Walkway	1
492	Chenango & Woodruff	5
493	Chestnut & College	4
494	Chestnut & Davis	4
495	Chestnut & Johnson	4
496	Chestnut & Lathrop	5
497	Chestnut & Leroy	5
498	Chestnut & Lincoln	4
499	Chestnut & Main	5
500	Chestnut & Riverside	5
501	Chestnut & Seminary	4
502	Chestnut & Seminary	4
503	Christopher & Mary	5
504	Clapham & East	1
505	Clapham & Fairview	1
506	Clarence & Mill	4
507	Clarke & College	5
508	Clarke & Main	5
509	Clarke & Unnamed Street	1
510	Cleveland & Floral	4
511	Cleveland & Grand	3
512	Cleveland & Mildred	5
513	Cleveland & Division	4
514	Cleveland & Floral	4
515	Cleveland & Garfield	4
516	Cleveland & Serrell	4
517	Cleveland & Stokes	5
518	Cleveland & Sumner	5
519	Cliff & Julian	1
520	Clifton & Hawthorne	4
521	Clifton & Ivanhoe	1
522	Clifton & Jutland	1
523	Clifton & Kenilworth	1
524	Clifton & Larchmont	1
525	Clifton & Vestal	5
526	Clinton & Colfax	5
527	Clinton & Crandall	5
528	Clinton & Front	5

529	Clinton & Glenwood	5
530	Clinton & Grace	5
531	Clinton & Holland	5
532	Clinton & Hudson	5
533	Clinton & Jarvis	5
534	Clinton & Murray	5
535	Clinton & Mygatt	5
536	Clinton & Oak	5
537	Clinton & Titchener	5
538	Clinton & Stanley	5
539	Clinton & Wilson	5
540	Clinton & Saint Cyril	5
541	Clinton & Starr	5
542	Clinton & Water	5
543	Clinton & West	5
544	Clubhouse & Vestal	5
545	Clubhouse & Vestal	4
546	Cobblers & Windy Hill	1
547	Colfax & Seymour	5
548	Collier & Court	5
549	Collier & Hawley	5
550	Columbus & Downs	5
551	Commercial & Henry	5
552	Commercial & Walkway	1
553	Conklin & Duke	5
554	Conklin & Exchange	5
555	Conklin & Gates	5
556	Conklin & Hayes	5
557	Conklin & High	5
558	Conklin & Home	5
559	Conklin & Homer	5
560	Conklin & Macon	5
561	Conklin & Medford	4
562	Conklin & Mill	5
563	Conklin & Otsenigo	4
564	Conklin & Proctor	5
565	Conklin & Rockbottom	3
566	Conklin & Ramp	4
567	Conklin & Holmes	5
568	Conklin & Telegraph	5
569	Conklin & The Arena	5

570	Conklin & Tompkins	5
571	Conklin & Tremont	5
572	Connecting Road & Crestmont	1
573	Connecting Road & Crestmont	1
574	Connecting Road & Water	1
575	Connecting Road & Water	1
576	Connecting Road & Water	1
577	Connecting Road & Water	1
578	Conti & Ridge	1
579	Corbett & Park	3
580	Corbett & Washington	1
581	Court & Ely	5
582	Court & Fairview	5
583	Court & Gaylord	5
584	Court & Glen	5
585	Court & Griswold	5
586	Court & Haskins	5
587	Court & Louisa	5
588	Court & Mason	5
589	Court & Milford	5
590	Court & Moeller	5
591	Court & Oliver	5
592	Court & Pig	1
593	Court & Ramp	5
594	Court & Ramp	1
595	Court & Ramp	1
596	Court & Riverside	5
597	Court & Century	5
598	Court & Exchange	5
599	Court & Fayette	4
600	Court & Main	4
601	Court & Myrtle	4
602	Court & Rutherford	3
603	Court & State	5
604	Court & Stuyvesant	3
605	Court & Washington	5
606	Court & Ramp	5

607	Court & Ramp	5
608	Crandall & Main	5
609	Crandall & Thorp	3
610	Crandall & Slauson	5
611	Crary & Grand	4
612	Crary & Main	5
613	Crary & Schubert	4
614	Crary & Harrison	4
615	Crary & Highland	4
616	Crary & Leroy	4
617	Crary & Riverside	5
618	Crary & Schubert	4
619	Crestmont & Highland	5
620	Crestmont & Leroy	5
621	Crestmont & Riverside	5
622	Crestmont & Highland	4
623	Crestmont & Leroy	5
624	Crestmont & Riverside	5
625	Crestmont & Grand	5
626	Crestmont & Jerome	5
627	Crestmont & Main	5
628	Crestmont & Schubert	4
629	Cross & Morris	4
630	Cross & Park	1
631	Cross & Pennsylvania	4
632	Curran & Duane	5
633	Curran & Mary	4
634	Curran & Vine	5
635	Cypress & Mygatt	5
636	Cypress & Oak	4
637	Cypress & Spruce	5
638	Davis & Laurel	5
639	Davis & Millard	5
640	Decatur & Harding	1
641	Decatur & Saratoga	4
642	Delavan & Ruthven	1
643	Denton & Kendall	3
644	Denton & Moore	4
645	Denton & Vestal	5
646	Dewey & Felters	5
647	Dewey & Montour	5

648	Dickinson & Murray	3
649	Dickinson & Mygatt	5
650	Dickinson & Oak	5
651	Dickinson & Starr	5
652	Division & End	4
653	Division & Snow	5
654	Dogwood & Hampton	1
655	Downs & Emma	5
656	Downs & Glenwood	3
657	Downs & Merrill	5
658	Downs & Tracy	3
659	Driveway & Holmes	1
660	Driveway & Veterans	1
661	Driveway & Vestal	1
662	Duane & James	4
663	Duke & Richmond	4
664	Dwight & Wall	4
665	Dwight & Water	1
666	Earle & Morgan	1
667	Earle & Spring	1
668	East & Willard	3
669	East Middle & Howard	1
670	East Middle & Mason	4
671	East Middle & Unnamed Street	1
672	Eaton & Florence	4
673	Eaton & Front	4
674	Eaton & Oak	4
675	Edgebrook & Ellsworth	1
676	Edgebrook & Vestal	5
677	Edna & Mary	5
678	Edna & Upper Vine	4
679	Edwards & Main	5
680	Edwards & North	4
681	Edwards & Thorp	4
682	Eldredge & Emmett	3
683	Eldredge & Prospect	2
684	Eldredge & Way	4
685	Eldredge & Rolison	3
686	Eldredge & State	4
687	Eldredge & Water	3
688	Ellsworth & Kendall	1

689	Elm & Mygatt	5
690	Elm & Oak	3
691	Elm & Saint Cyril	5
692	Elm & Spruce	4
693	Ely & Frederick	5
694	Ely & George	4
695	Ely & Grant	5
696	Ely & Robinson	5
697	Ely & William	4
698	Ely Park & Glenwood	1
699	Ely Park & Unnamed Street	1
700	Ely Park & Unnamed Street	1
701	Ely Park & Unnamed Street	1
702	Ely Park & Unnamed Street	1
703	Ely Park & Unnamed Street	1
704	Ely Park & Unnamed Street	1
705	Ely Park & Unnamed Street	1
706	Ely Park & Unnamed Street	1
707	Ely Park & Unnamed Street	1
708	Ely Park & Unnamed Street	1
709	Ely Park & Unnamed Street	1
710	Emma & Lake	3
711	Emma & Main	5
712	Emmett & Wales	4
713	Emmett & Robinson	5
714	End & Floral	5
715	End & Garfield	4
716	End & Harrison	3
717	End & Highland	4
718	End & Leroy	5
719	End & Van Ness	4
720	End & Serrell	4
721	End & Riverside	5

722	End & Schubert	4
723	End & Stokes	4
724	End & Sumner	5
725	English & Riverview	5
726	English & Robinson	3
727	Espial & The Circuit	1
728	Esther & Mill	4
729	Evans & John	5
730	Evans & Kress	5
731	Evans & Telegraph	5
732	Evans & Tompkins	4
733	Exchange & Hawley	4
734	Exchange & Ramp	5
735	Exchange & Security Mutual	4
736	Exchange & Shore	3
737	Exchange & Susquehanna	4
738	Fairview & Riverview	4
739	Fairview & Robinson	4
740	Fairview & Monroe	5
741	Fairview & Monroe	5
742	Fairview & Nash	5
743	Fairview & Willard	4
744	Fayette & Hawley	5
745	Fayette & Pine	3
746	Fayette & Susquehanna	3
747	Fellows & Gray	3
748	Fellows & Wilcox	2
749	Fellows & Queen	2
750	Fellows & Whiting	1
751	Felters & Saratoga	5
752	Felters & Saratoga	5
753	Field & Jarvis	5
754	Floral & Grand	5
755	Floral & Main	5
756	Floral & Margaret	4
757	Florence & Leroy	4
758	Florence & Main	5
759	Flynn & Vestal	1
760	Frederick & Liberty	3
761	Frederick & Roberts	3

762	Frederick & State Hwy 7	5
763	Frederick & State Hwy 7	5
764	Frederick & Montgomery	1
765	Frederick & Walter	4
766	Frederick & Whitney	1
767	Frederick & Gaylord	5
768	Frederick & Griswold	4
769	Frederick & Howard	5
770	Frederick & Louisa	5
771	Frederick & Mason	5
772	Frederick & Moeller	5
773	Frederick & Unnamed Street	1
774	Front & Gerard	5
775	Front & Karlada	2
776	Front & Leroy	4
777	Front & Main	5
778	Front & North	5
779	Front & Prospect	5
780	Front & Unnamed Street	1
781	Front & Winding	5
782	Front & Unnamed Street	1
783	Front & Ramp	5
784	Front & Unnamed Street	1
785	Front & Unnamed Street	1
786	Front & Riverside	5
787	Front & Valley	3
788	Garden & Riverview	5
789	Garden & Robinson	5
790	Gaylord & Mason	2
791	Gaylord & Robinson	4
792	George & Griswold	4
793	George & Louisa	5
794	George & Moeller	5
795	Gerard & Murray	5
796	Gerard & Oak	5
797	Gerard & Walnut	3
798	Gillen & Hampton	1
799	Gillen & Weslar	1
800	Glen & Robinson	3
801	Glenwood & Hazel	4

802	Glenwood & Julian	3
803	Glenwood & Lake	4
804	Glenwood & Lorraine	3
805	Glenwood & Prospect	4
806	Glenwood & Main	5
807	Grace & Jarvis	5
808	Grand & Helen	5
809	Grand & Matthews	4
810	Grand & Orton	4
811	Grand & Schiller	5
812	Grand & Kress	5
813	Grand & Oakridge	1
814	Grand & Telegraph	5
815	Grandview & Riverview	5
816	Grandview & Robinson	3
817	Grandview & Rossmore	4
818	Grant & Griswold	1
819	Grant & Louisa	5
820	Grant & Moeller	4
821	Griswold & Silver	5
822	Griswold & Robinson	4
823	Griswold & William	4
824	Guilfoyle & Mitchell	5
825	Guilfoyle & Park	5
826	Guilfoyle & Washington	4
827	Haendel & Mendelssohn	3
828	Haendel & Mozart	4
829	Haendel & Schiller	5
830	Hall & Otsenigo	4
831	Hall & Unnamed Street	1
832	Hall & Tompkins	5
833	Hamilton & Main	5
834	Hampton & Norfolk	1
835	Hancock & High	4
836	Harris & La Grange	1
837	Harrison & Matthews	5
838	Haskins & Rossmore	3
839	Hawley & Isbell	4
840	Hawley & Myrtle	4
841	Hawley & Rutherford	5
842	Hawley & Stuyvesant	5

843	Hawley & Walkway	5
844	Hawley & Ramp	5
845	Hawley & Washington	5
846	Hawley & Ramp	4
847	Hawley & State	4
848	Hawley & Washington	5
849	Hawleyton & Pennsylvania	1
850	Hawthorne & Vestal	5
851	Hayden & Mendelssohn	3
852	Hayden & Schubert	3
853	Hayes & Jackson	4
854	Hazel & Holland	5
855	Hazel & Johnson	4
856	Hazel & Stanley	3
857	Hazel & Wilson	4
858	Helen & Highland	5
859	Helen & Leroy	4
860	Helen & Westland	3
861	Helen & Westland	4
862	Helen & Taylor	5
863	Helen & Riverside	5
864	Helen & Schubert	4
865	Henry & Carroll	3
866	Henry & Prospect	5
867	Henry & Wall	5
868	Henry & State	5
869	Henry & Washington	5
870	Henry & Water	5
871	Henry & Liberty	5
872	High & Vestal	3
873	Highland & Kneeland	5
874	Highland & Matthews	4
875	Highland & Patricia	5
876	Highland & Rugby	5
877	Highland & Schiller	4
878	Holland & Julian	5
879	Holland & Prospect	5
880	Holmes & Saint Clair	1
881	Homer & Webster	1
882	Hotchkiss & Park	4

883	Hotchkiss & Pennsylvania	5
884	Howard & Robinson	5
885	Hudson & Slauson	2
886	Indiana & Sherwood	1
887	Indiana & Woodland	1
888	Isbell & Susquehanna	5
889	Isbell & Susquehanna	5
890	Ivanhoe & Vestal	5
891	Jackson & Moore	5
892	Jackson & Otsenigo	4
893	Jackson & Tompkins	5
894	James & Mary	5
895	James & Mill	3
896	James & Washington	4
897	James & Westerly	4
898	Jarvis & Main	5
899	Jarvis & Thorp	3
900	Jefferson & Kneeland	5
901	Jefferson & Rotary	3
902	Jerome & Orton	4
903	Jerome & Westwood	2
904	Jerome & Schiller	4
905	Johnson & Julian	4
906	Johnson & Laurel	5
907	Johnson & Millard	5
908	Julian & Ronan	5
909	Jutland & Vestal	5
910	Kane & Morgan	1
911	Kane & Rowe	5
912	Kane & Woodland	3
913	Karlada & Prospect	2
914	Kendall & Rush	5
915	Kenilworth & Larchmont	1
916	Kenilworth & Vestal	5
917	Kneeland & Leroy	4
918	Kneeland & Seminary	4
919	Kriska & Windy Hill	1
920	La Grange & Valley View	1
921	Lake & Merrill	5
922	Lake & Tracy	4
923	Lamont & Macon	3

924	Lamont & Proctor	4
925	Larchmont & Vestal	4
926	Lathrop & Laurel	5
927	Lathrop & Millard	2
928	Laurel & Leroy	5
929	Laurel & Lincoln	5
930	Laurel & Main	5
931	Laurel & Unnamed Street	1
932	Laurel & Riverside	5
933	Laurel & Schubert	4
934	Laurel & Seminary	5
935	Laurel & Riverside	5
936	Lennox & Vestal	3
937	Leon & Spellicy	5
938	Leroy & Matthews	4
939	Leroy & Millard	5
940	Leroy & Murray	3
941	Leroy & Oak	4
942	Leroy & Westland	5
943	Leroy & Rotary	3
944	Leroy & Saint John	4
945	Leroy & Walnut	3
946	Lewis & Prospect	2
947	Lewis & State	4
948	Liberty & Lyon	4
949	Liberty & Virgil	3
950	Liberty & Pine	3
951	Lincoln & Millard	5
952	Locke & Payne	1
953	Locke & The Arena	4
954	Lookout & Telegraph	4
955	Lorraine & Prospect	5
956	Louisa & Robinson	4
957	Louisa & William	5
958	Lourdes & Unnamed Street	1
959	Lydia & Murray	3
960	Lydia & Mygatt	5
961	Lyon & Roberts	5
962	Macon & Saratoga	4
963	Main & Mather	5

964	Main & Matthews	5
965	Main & Murray	5
966	Main & Oak	5
967	Main & Orton	5
968	Main & Schiller	5
969	Main & Walnut	5
970	Martha & Mary	3
971	Martha & Mitchell	5
972	Martha & Washington	4
973	Mary & Morgan	1
974	Mary & Morris	5
975	Mary & Richard	1
976	Mary & Sherwood	3
977	Mary & Stone	3
978	Mary & Vestal	4
979	Mary & Vestal	5
980	Mary & Woodland	2
981	Mason & Robinson	4
982	Mason & Robinson	4
983	Mather & North	3
984	Mather & Thorp	4
985	Matthews & Schubert	4
986	Matthews & Riverside	5
987	Matthews & Schubert	5
988	McNamara & Mill	5
989	Medford & Saratoga	4
990	Mendelssohn & Schubert	4
991	Midwood & Mill	1
992	Milford & Robinson	5
993	Mill & Newton	4
994	Mill & Phinn	4
995	Mill & Vestal	4
996	Millard & Riverside	5
997	Mitchell & Morris	4
998	Mitchell & Morris	4
999	Mitchell & Vestal	5
1000	Moeller & Parking Lot	5
1001	Moeller & Robinson	4
1002	Moeller & William	4
1003	Moeller & Spellicy	5
1004	Mohawk & Unadilla	1

1005	Montgomery & Whitney	5
1006	Montour & Saratoga	4
1007	Moore & Pennsylvania	4
1008	Morgan & Spurr	1
1009	Morgan & Spring	1
1010	Morgan & Washington	1
1011	Morris & Park	5
1012	Morris & Washington	4
1013	Mozart & Schiller	5
1014	Mozart & Schubert	4
1015	Murray & North	5
1016	Murray & Riverside	5
1017	Murray & Seminary	5
1018	Murray & Vincent	4
1019	Mygatt & Prospect	5
1020	Mygatt & Ramp	1
1021	North & Oak	5
1022	North & Walnut	3
1023	Oak & River Edge Apartments	1
1024	Oak & Riverside	5
1025	Oak & Seminary	4
1026	Oak & Prospect	4
1027	Oak & Spring Forest	4
1028	Oakridge & Utica	1
1029	Old Pennsylvania & Pennsylvania	1
1030	Oliver & Silver	5
1031	Oliver & Robinson	4
1032	Orton & Schubert	3
1033	Otseningo & Webster	2
1034	Park & Sherwood	3
1035	Park & Vestal	5
1036	Parking Lot & Roberts	1
1037	Bingham & Moeller	5
1038	Parking Lot & Washington	1
1039	Parking Lot & Water	1
1040	Patricia & Riverside	5
1041	Payne & The Circuit	5
1042	Pennsylvania & Ramp	1
1043	Pennsylvania & Ramp	5

1044	Pennsylvania & Sheldon	4
1045	Pennsylvania & Vestal	5
1046	Proctor & Thompson	5
1047	Prospect & Ronan	1
1048	Prospect & Tracy	5
1049	Prospect & Way	4
1050	Varick & Susquehanna	3
1051	Westmoor & Stokes	3
1053	Sunset & Riverview	5
1054	Sunset & Robinson	5
1055	Ramp & Tremont	5
1056	Stonecrest & Timberland	1
1057	Way & West State	5
1058	Way & State	5
1059	Vincent & Vermont	4
1060	Vista & The Circuit	1
1061	Thomas & Ridge	1
1062	Walter & Whitney	4
1065	Rubin & Riverview	5
1066	Rubin & Robinson	4
1067	Queen & Whiting	2
1068	Rolison & Water	4
1069	Virginia & Vermont	4
1070	Tudor & Susquehanna	2
1071	Stanford & Stokes	3
1072	Unadilla & Sherwood	1
1073	Snow & Sumner	5
1074	Ramp & Tremont	5
1075	Rexleigh & Woodland	5
1076	Vestal & Tremont	5
1077	Spurr & Woodland	2
1078	Summit & Rossmore	2
1079	Saint Cyris Cemetery & Riverside	5
1080	Ramp & Robinson	1
1082	Government Plaza & Hawley & Walkway	5
1084	North Windy Hill & Windy Hill	1
1085	Ramp & Susquehanna	3
1086	Ramp & Washington	3
1087	Riverside & Rotary	5

1088	Riverside & Saint John	5
1089	Riverside & Stratford	5
1090	Riverside & Vermont	5
1091	Riverside & Robinson	4
1092	Riverview & Wagner	5
1093	Robinson & Wagner	5
1094	Robinson & Whitney	5
1095	Robinson & Windy Hill	1
1096	Rollins & Vestal	4
1097	Roosevelt & Woodruff	5
1098	Rotary & Seminary	5
1099	Rush & Vestal	4
1100	Rush & Zane	5
1101	Saint Clair & Williams	1
1102	Saint Cyril & Starr	5
1103	Saint John & Seminary	3
1104	Schiller & Schubert	5
1105	Seminary & Walnut	4
1106	Sherwood & Washington	3
1107	Spring & Woodland	1
1108	Spring Forest & Spruce	4
1109	State & Woodruff	4
1110	State & Stuart	4
1111	State & Susquehanna	3
1112	State & Walkway	1
1113	State & Susquehanna	3
1114	State & Walkway	4
1115	Stone & Washington	4
1116	Stuart & Unnamed Street	1
1117	Stuart & Washington	4
1118	Stuart & Washington	3
1119	Susquehanna & State Street	3
1120	Susquehanna & Washington	4
1121	Susquehanna & Water	5
1122	Telegraph & Vestal	4
1123	The Arena & The Circuit	4
1124	Thorp & Walnut	5
1125	Tompkins & Webster	4
1126	Tremont & Vestal	4

1128	Upper Vine & Woodland	3
1129	Upper Vine & Woodland	5
1130	Vestal & Vine	5
1131	Vestal & Washington	5
1132	Vestal & Washington	5
1133	Vestal & Washington	5
1134	Wagner & Windy Hill	1
1135	Washington & Woodland	1
1136	East Middle & East Middle & East Middle	1
1137	Griffis & Glen & Nash	3
1138	Pleasant & Pleasant & Pleasant	3
1139	Cornell & Penston & Mill	3
1140	Brandywine & Brandywine & Brandywine	1
1141	Brandywine & Ramp & Robinson	4
1142	Dellwood & Dellwood & Dellwood	1
1144	Parking Lot & Chapman & Henry	3
1145	Fairview & Fairview & Fairview	3
1146	Frank & Balcom & Perry	3
1147	Brownson & Ogden & Yager	5
1148	Bellevue & Charlotte & Main	5
1149	Brandywine & Ramp & Robinson	5
1151	Herman & Jones & Seymour	3
1152	Maria & Maria & Maria	1
1153	Oneonta & Mohawk & Timberland	1
1154	Parking Lot & Chadwick & Veterans	1
1155	Parking Lot & Chadwick & Veterans	1
1156	Minden & Helen & Jerome	3

1157	Moffatt & Chenango & Truesdell	5
1158	Bevier & Bevier & Bevier	5
1159	Mountain & Mountain & Mountain	1
1160	Doubleday & Chenango & Prospect	3
1161	Ingersoll & Mygatt & State Hwy 17	5
1162	Ingersoll & Mygatt & State Hwy 17	5
1163	Normandy & Unnamed Street & Vestal	5
1164	Loretta & Conti & Ridge	1
1165	Campbell Rd & Campbell & Virginia	4
1166	Gold & Driveway & Griswold	4
1167	Centre & Carroll & Henry	1
1168	Cary & Sturges & State	4
1169	Lourdes Hospital & Kneeland & Riverside	5
1170	Holland & Holland & Holland	5
1171	Nash & East & Monroe	5
1172	Baxter & Baxter & Baxter	4
1173	Edgewood & Edna & Westerly	4
1174	Parking Lot & Virgil & Roberts	5
1175	Glenwood & Glenwood & Glenwood	1
1176	Glenwood & Helen & Main	5
1177	Armory & End & Rugby	4
1178	Bayless & Morgan & Park	3
1179	Beethoven & Lourdes & Riverside	5
1180	Bingham & Moeller & Parking Lot	5
1181	Brandywine & Court & Tompkins	5
1182	Brandywine & Morgan & State	2

1183	Brookfield & Driveway & Vestal	5
1184	Carroll & Ramp & Susquehanna	3
1185	Chapman & Court & Ramp	5
1186	Chenango & Court & Ramp	5
1187	Christopher & Midwood & Westerly	1
1188	Clinton & Lewis & Washington	3
1189	College & Laurel & Unnamed Street	4
1190	Collier & Hawley & Walkway	5
1191	Columbus & Lake & Market	5
1192	Conklin & Felters & Ruthven	5
1193	Conklin & Hall & John	4
1194	Conklin & Pennsylvania & Ramp	5
1195	Conklin & Walkway & Washington	5
1196	Court & Court & Court	1
1197	Court & Liberty & Ramp	5
1198	Court & Court & Court	5
1199	Court & Hawley & Water	5
1200	Court & Hawley & Water	5
1201	Crestmont & Crestmont & Crestmont	1
1202	Duane & Newton & Tremont	4
1203	Elm & Unnamed Street & West	5
1204	Ely Park & Ely Park & Ely Park	2
1205	Fayette & Henry & Lewis	2
1206	Fellows & French & Wilcox	2
1207	Gillen & Old Pennsylvania & Pennsylvania	1
1208	Hawley & Hawley & Hawley	1

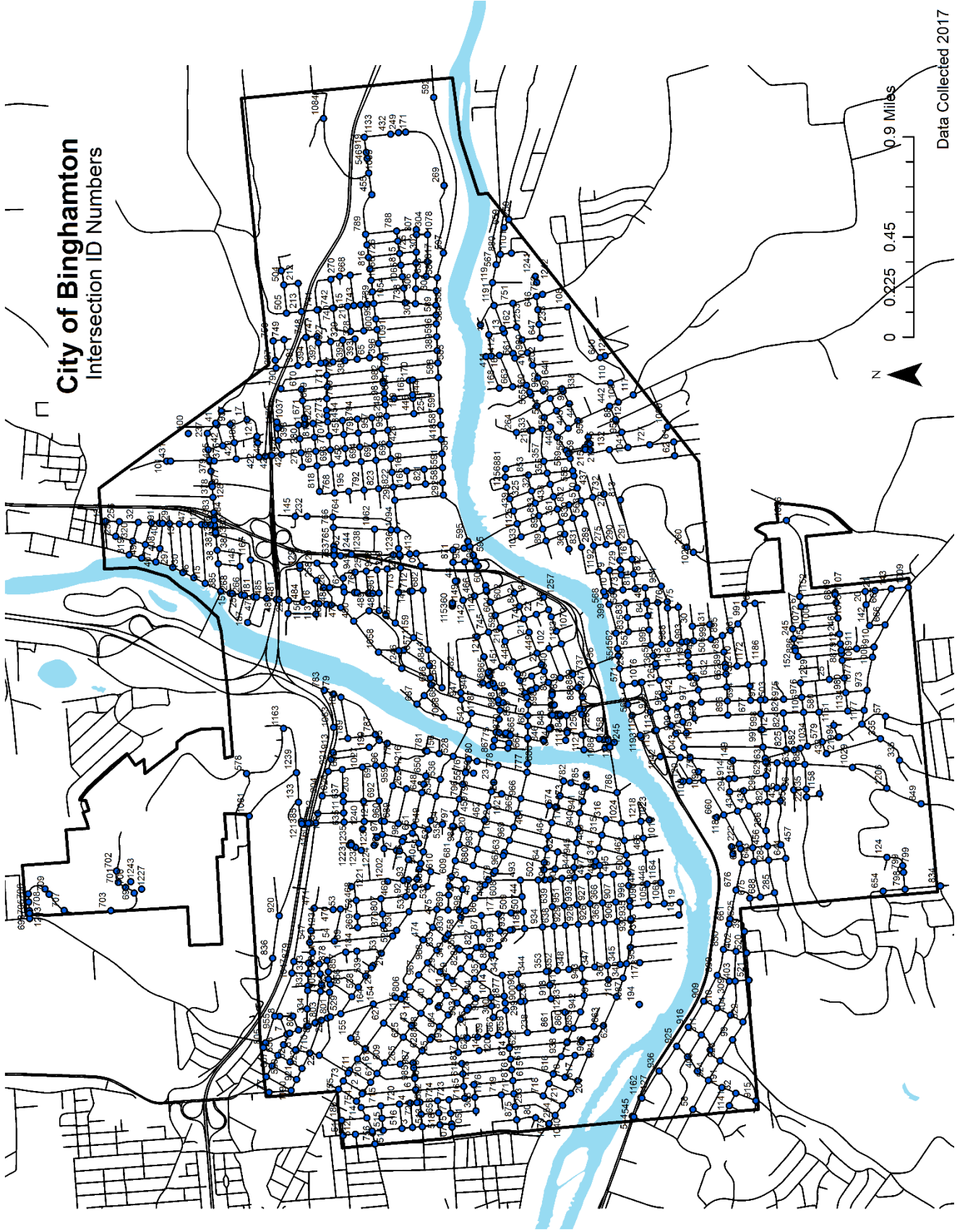
1209	Hawley & Ramp & Unnamed Street	4
1210	Henry & USPO Exit	3
1211	Henry & USPO Entrance	3
1212	Hill & Moeller & Spellicy	4
1213	James & Upper Vine & Vine	4
1214	La Grange & Mygatt & Ridge	1
1215	Liberty & Wales & Robinson	4
1216	Lookout & McNamara & Rollins	3
1217	Lydia & Oak & Winding	5
1218	Mygatt & Unnamed Street & Spring Forest	5
1219	Oak & River Edge Apartments & Vincent	4
1220	Park & Park & Park	5
1221	Webster & Webster	5
1228	Rugby & Rugby & Rugby	1
1229	Rugby & Rugby & Rugby	1
1230	Vine & Sherwood & Upper Vine	1
1234	Westland & Westland & Westland	5
1235	Seymour & Seymour & Seymour	5
1238	Shore & Shore & Shore	1
1240	Ridge & Ridge & Ridge	1
1241	Saratoga & Saratoga & Saratoga	1
1242	Saratoga & Saratoga & Saratoga	1
1243	Saratoga & Saratoga & Saratoga	1
1246	Riverside & Walkway & Water	5
1247	State & State & State	4
1248	Susquehanna & Susquehanna & Susquehanna	1
1250	Washington & Washington	1

1251	Water & Water Street Ramp	4
1253	Water & Water Street Ramp	4
1254	Frederick & Frederick & Frederick & Unnamed Street	4
1255	Afton & Saratoga & Saratoga & Saratoga	4
1256	Burton & Burton & Burton & Howard	5

1257	Hawley & State & State & State	4
1258	Hayes & Webster & Webster & Webster	2
1259	South & Ramp & Stuyvesant & Susquehanna	3
1260	Shore & Riverside & Walkway & Washington	3

Appendix D: Map of Intersection Identification Numbers

City of Binghamton Intersection ID Numbers



Appendix E: Public Complaint/Grievance Form

CITY of BINGHAMTON ADA GRIEVANCE FORM FOR FACILITIES WITHIN THE PUBLIC RIGHT-OF-WAY

This form is for requesting that the City of Binghamton review an existing public pedestrian facility as it relates to ADA compliance or to analyze the need for a new ADA compliant public pedestrian facility within the City of Binghamton's public right-of-way.

Contact Information:

Date: _____

Name: _____

Address: _____

Phone Number: _____

Email Address: _____

Location and description of ADA grievance (please be as detailed as possible):

Suggested solution:

The City of Binghamton's ADA Coordinator is the City Engineer. They may be contacted by calling the City of Binghamton's Engineering Department at 607-772-7007.

Please submit this form to the following address:

City Engineer, ADA Coordinator
Binghamton City Hall
38 Hawley Street
Binghamton, NY 13901

This form may also be brought to the Engineering Department at Binghamton City Hall

For Office Use Only:

Date of Response: _____ Action Taken: _____